

## Updates



## People, Places, and Passages



## Chapter News



# IN THIS ISSUE

MARCH 2010

## 3 AFE-ADB Updates

- 3 From the AFE-ADB President
- 3 From the Executive Secretary
- 4 AFE's New Logo Arrives
- 4 Health Matters
- 5 Pension Matters
- 5 1818 Society Workshops
- 10 ADB Positioned for Growth
- 11 ADB HQ—Physical Changes

## 15 Chapter News

- 15 Australia
- 16 Canada West
- 17 Canada East
- 17 Washington DC
- 19 Europe
- 21 India
- 22 Indonesia
- 23 Japan
- 24 New York—New Jersey
- 25 Philippines
- 26 Finland Newsflash

## 27 People, Places, and Passages

- 27 Lifeboats—AFE Helps Manila Flood Victims
- 34 Influential Woman—Ethel Luzario
- 34 Authoring: Freddie Lees
- 35 Mopping up Toxic Waste
- 36 Confessions
- 37 Good Ghosh
- 38 John Boyd Elucidates: What's the Law?
- 39 Chong Serp Chung
- 40 It's All About Communicating
- 40 Singapore with Raffy and HP Space
- 40 Bowling Us Over
- 41 A Cambodian in the Arctic
- 42 Heh-Song Wang—Speaking and Authoring
- 43 The Barangay OBG
- 44 Look What Came for Dinner
- 44 New Members
- 44 Senior Appointments in ADB
- 46 Obituaries
- 46 AFE-ADB Committees
- 47 AFE-ADB Website Now Open to All
- 48 Announcements

## OUR COVER



New mural on the entrance from ADB Avenue.

A boy wades through the floodwaters of Typhoon Ondoy (Ketsana).

Canada West AFE members get together.

## AFE-ADB News

Publisher: Hans-Juergen Springer

Editorial Board: Jill Gale de Villa (head), Gam de Armas, Stephen Banta, John Cole, David Parker, Hans-Juergen Springer

Graphic Assistance: Josephine J. Aquino

Photographs: ADB Security Unit, Nannette Amorado, Gam de Armas, Peter Carroll, John Cole, Charles Currin, Department of External Relations, Manny Faelnar, Rosa Francisco, Tess Gonzales, Eiji Kobayashi, Dimiyati Nangju, Filo Pante, Gino Pascua, Larry Ramos, Eric Sales, Ada Santos, Hans-Juergen Springer, Ophie Sta. Ana, Someth Suos, Takeshi Takahara, Jill Gale de Villa, Heh-Song Wang, Robert Wihtol

Fulfillment: Vic Angeles, Carolyn Dedolph Cabrera, Ronnie Elefaño, Gregg Garcia, Keech Hidalgo, Anna Juico, Alexander Tarnoff, Tony Victoria, and the ADB Publications and Printing Units

Distribution: Andrea Carlos, Cesar Juan, Marilou Magalued, and Reymundo Navarro—ADB Communication Center

Note: Dates with authors indicate the years of service with ADB, or the year of leaving service.

# AFE-ADB Updates

## From the AFE-ADB President

Bong-Suh Lee (ADB 1993-1998)



It has been a little more than a year since I was elected as the fourth President of the Association of Former Employees of the Asian Development Bank (AFE-ADB). During the year, I visited Manila in March to talk with the AFE team and with ADB's President Kuroda; attended and spoke at the annual

meeting in Bali, Indonesia in May; and participated in several gatherings of the Korea AFE chapter.

During my visit to Manila, I became more familiar with the AFE organization and the people who run it. It was also a good opportunity to reconnect with ADB staff members whom I knew from my stint at ADB as vice-president during 1993-1998, and to meet with ADB management and directors on the Board as well as AFE members.

In Bali, I presided over the AFE-ADB Annual General Meeting, and was pleased to meet with former colleagues and current ADB officers. I hosted the traditional AFE cocktail reception, with ADB President Kuroda attending as the guest of honor. During the meeting and the cocktails, it was a pleasure to speak with many active AFE members.

My activity as a member of the AFE Korea chapter has been equally satisfying. Every second Thursday of each month, we have a luncheon gathering where some 10-15 members get together and exchange the latest news. The highlight of the gatherings was of course the annual Christmas party. Thanks to chapter president Hi Young Kim, who once served as executive member of the Hyatt Hotel, we had the luxury of holding the function at a party room with prime nocturnal views at a very reasonable price. More than 25 couples participated.

I am glad to serve as President of the Association of Former Employees of ADB, which, I believe, effectively

manages the twin objectives of (1) representing the interests of AFE members vis-à-vis ADB, and (2) providing a vehicle for communication among members and between them and ADB and AFE. In carrying out my duties, I am very fortunate to have full support of Mr. Springer and his associates, who are completely devoted to accomplishing these objectives.

I join the AFE team in welcoming you to our next annual meeting in Tashkent, Uzbekistan during 1-4 May 2010.

## From the Executive Secretary

Hans-Juergen Springer (ADB 1972-2002)



At the time of printing our last newsletter, large parts of Metro Manila were inundated by the exceptionally high rainfall caused by typhoon Ondoy. Damage to life and property was significant. Many AFE members suffered and sustained losses to their property.

Pursuant to our request for donations, a large number of AFE members responded generously, some ear-marking money for fellow retirees, others stating it should go to the poor. A total of \$11,371 was received. Part of the funds went to the worst affected AFE members who were former local ADB staff members. Those who were assisted have expressed their heartfelt thanks. The rest was given through the ADB Staff Community Fund (SCF), which has been assisting worthwhile causes in Metro Manila since 1997.

Part of the funds provided through the SCF went to Virlian Foundation, which supplied bags of food, vitamins, and medicine to families still affected by the floods in early December 2009. The rest of the funds went to New Faith Family Children's Home, also to assist those who still could not return home due to continued high water levels. A thank you to all members who responded quickly and generously to our call for help.



In the middle of September 2009, six of us—Bernard Donge, Ed Haugh, Gene Owens, Jill de Villa, Clay Wescott, and I—attended the first 1-day conference of international retiree associations, organized by the World Bank’s 1818 Society, in Washington DC. Four topics were discussed: governance, pensions, medical insurance, and communication and social matters. Not surprisingly, issues raised and concerns expressed were very similar among all seven associations that participated in the meeting.

As you have seen on the cover of this issue of the *AFE-ADB News*, we have a new logo. Since ADB had changed its logo, which depicted industrial development with a cog wheel and agricultural development with a sheaf of grain, AFE was asked to replace its old logo too, as it evoked ADB’s old logo. E-mailed reactions from members indicate that the choice is generally liked.

Our website has been sufficiently tested, and it is now time to make it available to the public before our next annual meeting in May 2010. Some more work needs to be done, especially to make appropriate arrangements to manage and frequently update the website. Since a website is not cast in stone, we always welcome suggestions for improvements. Do not hesitate to contact us.

AFE continues to receive—and need—assistance from many volunteers, including those involved with flood relief during the Ondoy time, and the members of our committees on pension, health, and newsletter, as well as the country coordinators and those who assist them. Thank you to all.

## AFE’s New Logo Arrives



John Cole (ADB 1983–2004)



**A**FE has a new logo. It is a simple, direct, modern way of representing our organization, and it is in keeping with the style that has been increasingly used by ADB itself for the last decade or so. Our former logo was inspired by the traditional ADB logo, introduced in the late 60s, which has now been largely phased out.

Developing and deciding on the new logo was quite a challenge. The Editorial Board asked numerous people to come up with designs, including the design staff in ADB’s Department of External Relations and the membership at large. The result was a wide selection, and we all know what happens when there are too many choices. This led to a lot of trying to figure out which might be best and for what reasons, with numerous pros and cons being put forward, before the Editorial Board agreed on the one we feel best suits AFE as we approach our second 25 years of service to former staff of ADB.

The logo selected uses ADB’s “blue block” and adds another block for the “AFE” part of our name, thus retaining the visual link with ADB’s “visual identity,” much as we retain our link with our former employer.

## Health Matters

Jill Gale de Villa (ADB 1993–2005)



**A**s of this writing, all’s quiet on the eastern front—not much is new in our direct health insurance situation.

**Medical Insurance.** Hans and I met with the Staff Development and Benefits Division (BPDB) and Vanbreda on 28 January. Vanbreda

provided a PowerPoint that included a graph of inflow (premiums to the insurer) and outflow (the insurance payments for medical care). The former exceeded the latter by a comfortable margin for 2009, so we are not expecting a premium increase in 2010. The excess is now held in a fund to smoothen future increases in payouts.

There were no cases entailing major expense (called “peak files”) in 2009, partly because some US-based participants used Medicare as a first insurer. (However, one major case that will be charged to 2010 is already known to Vanbreda.) Vanbreda’s report is available on the AFE website.

**Benefits Comparison with Other Similar Retirees’ Groups.** Pursuant to the meetings with the six other participating retirees’ organizations at the health insurance workshop hosted by the World Bank in September 2009, I am working with two

others to create a matrix that will hopefully allow the participating retirees' associations to compare and contrast what the seven groups do and don't have. When complete, this should give us a better idea of where we stand, and what we may wish to request.

**Long-Term Care Insurance.** We asked Vanbreda why the evaluation of applications is taking so long, and asked that this be sped up. They explained that the insurers are used to handling group policies where all members of the group are required to join and the insurer takes all. In ADB's case, joining is optional, and each case has to be evaluated individually. In addition, BDPD is still notifying applicants who have been accepted.

**Health Insurance Manual.** Hans asked in an official memo that BPMSSD prepare a manual (online) that consolidates what GMIP participants need to know. This is needed because ADB retirees at present do not have access to the ADB intranet. World Bank retirees have access to such a document through the websites of the World Bank and its retirees association.

**Estate Manual.** World Bank retirees have a "manual" that may be signed by retiree and spouse indicating what the benefits are, and contacts, in case of extremis. We are working to produce a similar document, which will allow for a wider coverage, to include information on both ADB benefits and assets and documents beyond ADB (e.g., location of birth certificates and passports, contacts for attorneys and doctors, etc.). This will be available in hard copy and online. The online version will be most useful because each person can download and tailor it to individual circumstances.

## Pension Matters

Hans-Juergen Springer

The ADB Pension Committee met on 1 December 2009 for an initial briefing on the ongoing review of the strategic allocation of the assets of the Staff Retirement Plan (SRP). The briefing was given by two staff members of Watson Wyatt HKG Ltd., the company that also carries out the annual actuarial review of the SRP. While the strategic asset allocation review falls under the purview of the ADB (Pension) Investment Committee, Watson Wyatt assists in that work.

A few statistics: the SRP had 2,517 "active participants" (i.e., current ADB staff members) and 1,563 pensioners including spouses, children, and deferred pensioners. As a result of the sharp decline in investment markets in 2008/2009, the SRP currently shows a deficit.

Preliminary results of the review indicate that the investment fund's current division of 70% equity and 30% bonds remains desirable. However, Watson Wyatt recommends that the 30% fixed income portfolio, which is currently entirely in US investments, be broadened into a global fixed income portfolio. Watson Wyatt also recommends that the present 8% discount rate, which is identical to the expected long-term investment return, be reduced to a more conservative rate of 7%–7.5%. The Pension Committee will be briefed again before final decisions are made on the strategic allocation of the SRP assets. After a decision on the allocation has been made, the SRP's actuarial assumptions will be reviewed, later in 2010.

ADB President Kuroda, as the chairman of the Pension Committee, set the tone for ADB's pension investment policy when he said that the SRP investment strategy should be conservative, while at the same time maximizing return given certain risk parameters.

On 11 December 2009, the AFE Pension Council met Rajiv Nundy, Principal Compensation and Benefits specialist in BPMSSD's Staff Development and Benefits Division (BPDB). Mr. Nundy has taken over the pension portfolio from Cristina Keppler, who now concentrates on medical insurance and the long-term care plan. Mr. Nundy briefed the council on various aspects and recent developments of the SRP.

## 1818 Society Workshops

Jill Gale de Villa

The 1818 Society, Association of World Bank Group Alumni, hosted a meeting of retirees' associations of seven international financial institutions on 24 September 2009, at the World Bank, Washington DC. The meeting comprised four simultaneous workshops—on health insurance, communications, pension, and governance.

The attending organizations were the

- 1818 Society, Association of World Bank Group Alumni;
- AFE-ADB;

- Association of Former International Civil Servants, Washington Chapter (AFICS/W);
- Association of Former PAHO/WHO (Pan American Health Organization, World Health Organization) Staff Members;
- Association of Retirees of the IDB (Inter-American Development Bank);
- Association of Retirees of the Organization of American States (AROAS) and Association of Pensioners of the Retirement and Pension Fund of the OAS (ASPEN); and
- International Monetary Fund Retirees Association (IMFRA).

AFE was the only association present without headquarters in the US. Thanks to assistance from our Washington-based colleagues, as follows, we were able to cover the meetings well:

- governance—Hans-Juergen Springer;
- health—Gene Owens and Jill Gale de Villa;
- pensions—Clay Wescott; and
- social networking, credit unions, and communication—Bernard Donge and Ed Haugh.

At the end of each workshop, participants agreed to form an e-group to continue communication and work.

Major points are given below.

## Governance

### Hans-Juergen Springer

**Financial Resources.** Because annual dues are time-consuming to collect, deduct them from pension or drop them (possible alternative: a one-time lifetime membership fee). A strategy is needed for using accumulated funds (one possibility: an emergency fund).

**Recruitment.** Involve active staff before retirement. Have a presence at preretirement seminars. Send individual letters to new retirees explaining the purposes of the retirees' organization and soliciting membership. Have a memorandum of understanding with the active staff association, which may extend to collaboration. For special projects, one-on-one solicitation works better than a blanket call for volunteers.

**Support from, and Relations with, Parent Organization.** Ask for a management letter to country offices urging support for retirees, and any retirees' organization, resident in that country. Engage with the parent organization for using retirees in advocacy and other activities.

**Governing Documents.** Active review of bylaws is required to ascertain any changes needed. Several international retirees organizations have recently reviewed/revised their bylaws, or are in the process of doing so, and have shared copies.

**Other.** Maintain a database/directory of retirees. Establish an e-mail list of retirees for continuing contact. The retirees' association can be a locus for promoting institutional history. Explore the possibility of e-voting to conduct annual elections.

## Health Insurance

### Jill Gale de Villa and Gene Owens (ADB 1982–1997)

**Nature of the Plans.** All plans except ADB's are self-insured, funded by the institution and retirees in some proportion ranging between roughly 3:1 and 2:1, with the institution providing the larger portion. Once copayments, coinsurance, and deductibles—which are not factored into the institutional subsidies—are taken into account, the institutional contribution is lower. ADB contributes 75% of the premium for basic insurance benefits for its retirees. Vanbreda International is the administrator of its plan; the insurer is a group headed by Assurances Générales de France.

Several insurance companies are used as administrators of the various plans. Within the US, administrators include Aetna, Blue Cross/Blue Shield, Cigna, and Hygea. Vanbreda administers international claims, except for organizations that administer their own international claims.

Whether retirees are combined with active staff participants or have a separate retiree insurance pool varies by organization.

Specific plan details, such as whether dental or preventive care is included, whether the plan will reimburse a percentage of actual expenses as opposed to the US insurance industry's "usual and customary" amount, and what percentages of charges will be reimbursed, vary by organization as well.

Premiums have generally been going up. The retiree premiums are generally linked to pension and/or salary amounts at retirement.

**Requirement to Join Medicare.** Of the seven institutions, only three require members to join Medicare when eligible. Medicare premiums are dealt with differently for each, ranging from some discount to full reimbursement of the Medicare premium. When



Retirees' association representatives at the plenary session of the workshops hosted by the 1818 Society. L-R: Edward Omotoso, Alfonso Munevar, Hans-Juergen Springer, Nancy Berinsein, James R. Taylor, and Klaus Boese.

in Medicare, it becomes the primary insurer and the institution's plan is secondary, resulting in a huge savings to the institution's plan.

**Grievance Processes.** The institutions have different approaches for when claims are denied or not sufficiently reimbursed. At the World Bank, the plan's administrator (Aetna) manages appeals, with no institutional recourse. IMF, IDB, and OAS have an institutional grievance process for those who are dissatisfied with the administrator's resolution. Some institutions have surveillance committees that must approve specified medical procedures.

**Institutional Obligation to Consult.** The following were discussed, and merit further work: When changes are desired in the plan, to what extent is the institution obliged to consult? Likewise, what is the legal obligation of the institution to continue its level of subsidization?

Carol Collado of PAHO/WHO, Jill de Villa of ADB, and Pat King of the 1818 Society are working on a matrix to present positions and enhance analysis of these matters.

## Pensions

### Clay Wescott (ADB 1998–2006)

**Non-US Currency Option.** The organizations follow different approaches for currency conversion and pension of non-US currencies. Retirees living outside the US have a disconnect between the US COLA and the COLA where they live, as well as the

exchange rate issue. Given the variety of situations, the selection of currency is an issue that becomes a personal decision with no single approach clearly beneficial in all cases.

**COLA.** The consensus was that our plans' choices of index are appropriate. COLA adjustments are automatic and based on broad CPI measures. However, it was felt that CPI data are manipulated at times. COLA calculation is cumulative for certain organizations (World Bank), and point to point for many other organizations (ADB, IMF). The point-to-point or incremental method of calculation is preferred, because the cumulative method allows for a clawback. ADB provides a minimum adjustment of 3%. In this area, ADB's scheme is more generous than others.

There was a short discussion on whether COLA should reflect the increase in retirees' medical premiums. But this was not favored, because it would open up calls for many other adjustments that could work against pensioners.

**Taxation of Pensions.** Most international organizations compensate for tax on salaries. Because salaries and contributions to pension funds in international organizations are guided by a principle that equalizes salaries for all employees on an after-tax basis in each country, the same principle should apply to pensioners.

**Plan Governance, Funded Status, and Employment Contract Changes.** All funds are presumed to be in good health, particularly when viewed in comparison with average private sector or



government-backed pension schemes.

Discussions highlighted the importance of the pensions being fully funded as per the actuarial recommendations and for the funds being as separated/ segregated as institutionally and legally possible from other funds in the corresponding institution. This is to ensure that the necessary funds are available at all times to pay the pensions and that the funds cannot be used for other purposes. This is particularly relevant for organizations like ADB that are exposed in private markets—in the unlikely event of default, bondholders would be paid before pensioners. Re the World Bank, shareholder guarantees apply only to bondholders, not to pensioners. The positive side of ADB’s nonsegregation is that ADB advances funds to cover cash shortfalls, thus avoiding distress asset sales in weak markets. IMF pensioners don’t face this risk, since IMF borrows from its shareholders, not from markets. IMF doesn’t segregate its pension funds, but IMF lawyers believe that the pension fund is an effective trust, even if not formalized, depending on good faith.

Lack of transparency and representation was a major issue. Retirees are sometimes not represented in various committees, particularly in investment and finance committees, or do not have alternates. Retirees have the knowledge to add value to investment decisions—several retirees worked in investment and pension areas, and hence are fully qualified to participate in these committees.

Further, retirees have made financial contributions to the pension plans and are hence stakeholders. Consequently, pensioners have a legitimate right to receive timely, reliable, and relevant information on

the status of their pension funds and to be provided with an opportunity to convey their concerns to those making decisions about policies, investment, and administration of the pension funds. Pensioner associations can provide useful inputs, since some of their members have extensive experience in pension funds management.

There was a shared perception that full funding and segregation of the pension funds, timely access to relevant information and to decision makers, and the formalization of participation in the pension committees are particularly necessary given changing economic and contractual conditions that are likely to put increasing pressures on defined benefit plans.

Concerns were expressed about changing employment policy and deteriorating employment conditions, and new (not-so-favorable) employment contracts and their impacts on pension plans and governance.

Investment policy should change in relation to the age of the plan. As pension funds mature (higher ratio of pensioners to active staff), the investment strategy should change in the same way it does as an individual matures, i.e., greater proportion of fixed income, less equity.

## Social Networking, Credit Unions, and Communication

Ed Haugh (ADB 1980–2006) and Bernard Donge (ADB 1973–1995)

The 1818 Society President noted that the World



Some of the participants at the workshops for international retiree associations.



Bank's management has begun to promote the society as an asset to be used to promote the agency, rather than as a group of retirees. One example is the establishment of a speakers' bureau consisting of alumni who are willing to promote the agency to the public.

**Social Networking.** For all the groups, the main form of outreach is through their country chapters. The 1818 Society also has sector chapters that promote social interaction among like-minded professionals. The IMF retirees' organization arranges regular luncheons for Washington area retirees. The 1818 Society noted the difficulty of reaching out to all constituencies. Innovative ideas on how to reach out are needed.

All the agencies communicate with members through regular bulletins and newsletters. The ADB magazine was admired (indeed, it disappeared). World Bank has (1) a blog on its website to promote interaction among members; (2) a Facebook page, but it is not active; and (3) an E-Book on its website commemorating the 30th Anniversary of the 1818 Society. The 1818 Society has produced a manual on Survivors' Benefits.

The 1818 Society's Retirement and Active Lifestyle Committee (RALC) promotes alternative retirement living options, focusing on information facilitation. The RALC resource materials are on the 1818 Society website and can be accessed by nonmembers. (The easiest way to access it is to "google" the words "World Bank 1818 Society RALC".) This includes a list of emergency service contacts. AFE members are welcome to participate in RALC activities. A key issue for RALC is that, although members enjoy using their services, it is difficult to get volunteers to do the

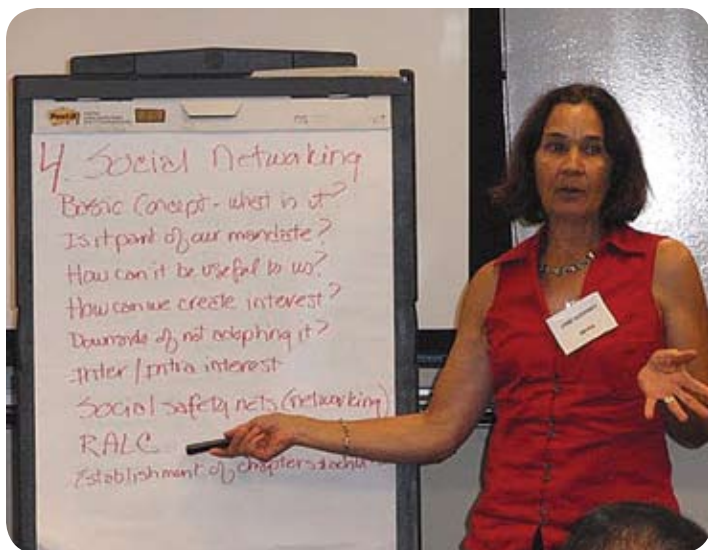
organizational work.

**Credit Unions.** World Bank, PAHO/WHO, IMF, and the UN have credit unions. Members are generally satisfied with the credit unions. There are some issues with accessibility to funds outside the US. There was a brief discussion on whether it would be possible to promote more collaboration among the credit unions. If there is interest, the AFE Washington group might pursue the possibility of obtaining approval for former ADB staff to join one of the credit unions. The UN allows any former international civil servant to join its group.

**Communication.** All agencies are in a transition from paper-based communication to more web-based communication. All have websites. The 1818 Society's is the most developed. Web-based communication will be increasingly important. Practical issues include developing comprehensive e-mail lists and determining if members want to receive e-mails. Directories of retirees are in high demand. There is a move to post these directories on websites, though privacy issues need to be considered. The 1818 Society updates its member directory by having access (limited to contact information) to the World Bank pension database.

Visit AFE online at  
[www.afe-adb.org](http://www.afe-adb.org)

See also ADB's alumni portal  
[www.adbalumni.org](http://www.adbalumni.org)



Presentation on social networking by Jane Godfrey, IMFRA.



Presentation on communication by Jean-Yves Maillat, 1818 Society's director for relations with international retiree organizations and coordinator of the workshop.

# ADB Positioned for Growth

Haruhiko Kuroda (ADB President, 2005–)



As a new decade opens, much will be demanded—and expected—from our institution. With the tripling of its ordinary capital resources last year to about \$165 billion and the \$11 billion replenishment of the Asian Development Fund (ADF X) in 2008, the Asian

Development Bank (ADB) is positioned for dramatic growth.

Strategy 2020 reaffirmed ADB's mission to reduce poverty and improve the quality of life in Asia and the Pacific through focused operations, innovative thinking, and partnerships. Moving forward on this mission is critical: The latest data show that about 930 million people in our developing member countries (DMCs) continue to live in extreme poverty. Moreover, the rapid gains made in poverty reduction before the global financial and economic crisis are now at risk.

Fortunately, the region has once again demonstrated its resilience. After dropping sharply from an impressive 9.5% in 2007 to 6.1% in 2008 and an estimated 4.5% in 2009, developing Asia's gross domestic product (GDP) growth is set to bounce back to about 6.6% in 2010. ADB is part of this success story. The capital increase was granted at a time when many of our DMCs were struggling to deal with the impacts of the global crisis. Increased resources allowed us to respond quickly and effectively to the need for additional assistance, with total additional lending of \$10 billion in 2009–2010.

But while Asia is beginning to recover from the crisis, its longer term development challenges remain large. With increased resources, and guided by Strategy 2020, ADB is well equipped to respond to demands from its DMCs. The volume of operations, including cofinancing, will increase substantially to an annual average of \$17.5 billion in 2010–2012.

Climate change has emerged as one of the region's overarching challenges, requiring action at global, regional, national, and local levels. We at ADB need to provide leadership and step up our

assistance to help our DMCs meet this challenge by funding projects identified in regional climate change implementation plans, and by "climate-proofing" infrastructure. Another key focus will be increased financing of regional cooperation projects in more diversified subregional groups, and blending of "hard" regional infrastructure investment with "soft" aspects such as trade facilitation, communicable disease and HIV/AIDS control, and sustainable environmental practices. Private sector development and private sector operations will continue to grow to a projected 50% of ADB operations by 2020.

Consolidation of ADB operations in core sectors will raise the share of infrastructure to 77% of total operations over the next 3 years. To improve living conditions and reduce environmental and health hazards, the share of investment in urban areas will increase, with emphasis on water supply, sanitation, and urban transport. Investments in low-carbon techniques in the transport sector will reach about \$5 billion, with increasing emphasis on energy efficiency, renewable energy, and carbon trading. About one third of ADB's infrastructure operations will be for small-scale infrastructure in rural or less developed regions. The lending volume for education, agriculture, and health will increase by as much as 100% compared with 2006–2008.

Of course, ADB will need to grow as an institution to fulfill its increasing role in the region. To this end, our work will become more knowledge-intensive and innovative through upgrading of staff skills, intensified partnerships with external centers of excellence, and stronger communities of practice. We have also simplified and streamlined project processing, and strengthened procurement and disbursement capacity. Significant resources will be allocated to implement the revised safeguard policy. And resident missions, the first point of contact and focal point for country-related matters, will be further strengthened, with an increase in the number of resident mission staff. Overall, ADB's staff complement will increase by about 500 new positions over the next 3 years, particularly in the operations and knowledge departments, and to strengthen some areas and functions, such as risk management and private sector operations, safeguard policy implementation, procurement oversight, and gender mainstreaming.

The hard work ADB has undertaken in recent years to become more relevant, responsive, and results-oriented is paying off. With the strong support of our staff, shareholders, and partners, as well as the wider ADB community, we can continue to contribute to meeting the needs and aspirations of the dynamic and growing Asia and Pacific region.





# ADB HQ—Physical Changes

Larry Ramos (ADB 1989–2000)

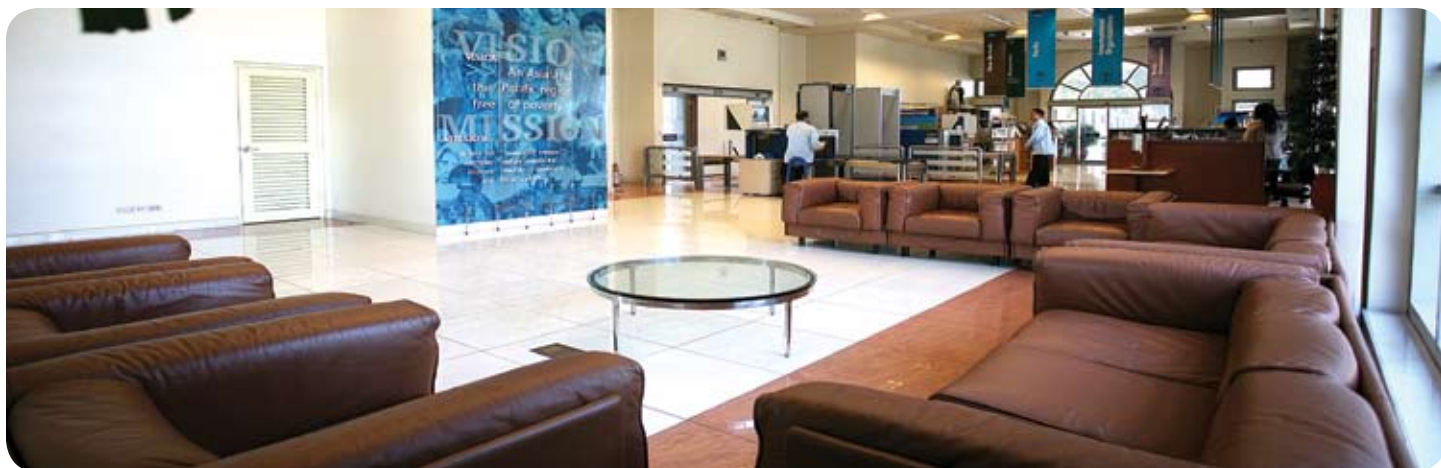


Above L: ADB headquarters, 1991, from the then-vacant lot on the other side of ADB Avenue. R: Now, from the sidewalk, as the lot is no longer vacant.

R: Murals on the new Visitors Reception Center building at the main entrance, on ADB Avenue, depicting ADB's vision and mission.



Below: Inside the Visitors Reception Center.







Above, L: The former main library. The two atria of the former library now house the Library (with fewer hardcopy publications, but with wide access to publications and resources online), Knowledge Center, and "Consultants' Hoteling." Above R and below: the hoteling area, with individual cubicles amid the former stacks, as well as areas for groups.





Below: The former documents area houses the remaining hardcopy publications; the Knowledge Center, which is used for presentations and book launches; and Starbucks, for a coffee shot and for interacting and talking with colleagues.



Below L: Additional drink stalls outside the cafeteria include Figaro, San Francisco Coffee, and a juice bar.



Above R: The cafeteria, which is being renovated to allow more space for diners and concessionaires, to increase the variety of food offered.





Above: A new covered walkway leads between the gate from EDSA and the West Core entrance, and is especially appreciated on rainy days.



Above L: The area originally designed as a tennis court was turned into a parking lot when nobody wanted to play tennis right next to EDSA; currently construction is just starting on a multistorey parking garage. Above R: Part of the current parking lot on the west side of the building will be converted into a third atrium to accommodate the increasing number of staff members working at ADB.

*Note: Larry Ramos, a professional architectural photographer, worked with the company that built ADB's Roxas Boulevard headquarters, photographing the building from its inception. Since retiring from ADB, Larry has actively continued his profession.*



# Chapter News

## Australia

Peter Carroll (ADB 1982–1999)

The Australian Chapter moved to warmer climes for its 2009 Reunion and Annual General Meeting (AGM), 11–14 October. We met for a most enjoyable and successful get-together at the lovely Eagle Heights Mountain Resort at Mount Tamborine in Southern Queensland, with extensive views across to the tall buildings of the Gold Coast and the Pacific Ocean beyond.

Members and spouses came from many quarters including New Zealand, Victoria, New South Wales (NSW), and, of course, Queensland. The following members and partners joined Chàn and me for the talkative and happy “Welcome Cocktails and Dinner” on Sunday evening: Bob Byrnes, Neil Collier, Alex and Lynne Gordevich, Willy and Nolene Lim, Ai Tee and Alan Loh, Con and Helen Pappas, Colin and Marian Pratt, Joe and Margaret Rajaratnam, Mike and Pat Ryan, Pat and Abbas Talib, Sinyan and Louine Tay, John and Beth Thorp, Phil and Sue Young, and Ken and Rosalie Waller.

**Business Meeting.** The AGM was conducted on the Monday morning. The Minutes of the 2008 AGM were accepted. In the coordinator’s report, I noted the

passing of a number of members during the year, then summarized events since the last chapter meeting. I thanked the organizers (Pat and Abbas Talib) of this year’s reunion, and John Ling for his work as treasurer-secretary.

Ken Waller conducted the election of officers for the coming year. I was re-elected as coordinator and chairman; John Ling as treasurer and secretary with Ken Waller acting as assistant in view of John’s illness; John Thorp as the state representative for Victoria, South Australia, Western Australia, and Tasmania; Neil Collier and Phil Young as representatives for Queensland; and Con Pappas and Alex Gordevich to represent NSW.

General issues discussed and agreed upon included (1) the pension scheme and the need for AFE–ADB representation on ADB’s Pension Committee; (2) the need to address problems accessing online pension details; (3) the need for a health insurance manual, as proposed by AFE–ADB; (4) an Australian tax submission prepared by Bruce Purdue and submitted by Peter Carroll—a vote of thanks to Bruce for his efforts was unanimously endorsed; (5) endorsement of the changed system of voting for AFE–ADB officers; (6) the need for ADB assistance in obtaining visas to visit Tashkent for the Annual Meeting; and (7) the importance of notifying AFE–ADB headquarters and the chapter coordinator of changes in postal and e-mail addresses.



L–R: Peter Carroll, Willy Lim, Margaret Rajaratnam, John Thorp, Noleen Lim, Abbas Talib, Tay Sin Yan, Beth Hilton-Thorp, Lorine Tay, Loh Ai Tee, Alan Loh, Sophie Pappas, Helen Pappas, Phil Young, Bob Byrnes, Pat Talib, Sue Young, Chàn Carroll, Con Pappas, Marian Bond, Lynne Gordevich, Colin Pratt, Alex Gordevich, and Neil Collier.



Peter Carroll with Loh Ai Tee and Willy Lim, winners of the Peter Pattison Memorial Trophy.

Under Other Business, I reported on the executive secretary's efforts to organize disaster relief for the Philippines in the wake of the devastating typhoons and the expectation that a letter would be sent to all members requesting assistance. Mention was also made of the proposed new logo for AFE.

The meeting unanimously endorsed Colin Pratt's suggestion that the next Chapter Meeting be combined with the New Zealand Chapter in Queenstown, New Zealand, in October 2010. The meeting enthusiastically approved a vote of thanks to the coordinator and the organizers of this year's reunion. The meeting concluded at 11.00 am.

**Socials, Tours, and Golf.** We all enjoyed a privileged and interesting life during our time with ADB and made many long-lasting friendships.... Life is all too short, and I believe it is important that we cherish, facilitate, and build on those ties and enjoy, when we can, renewing our fellowship with members of our AFE-ADB family in Australia. Following a very pleasant lunch on the patio overlooking views to the ocean, many of the group joined the Tamborine Trolley Co. bus for a delightful tour of some of the tourist foci of Mount Tamborine, including the Rainforest Sky Walk and Eco Centre, the Tamborine Mountain Distillery, a winery, and other attractions. We regrouped at the resort in the evening for drinks and a leisurely dinner. Tuesday included resting, talking, walking, golfing, and touring surrounding districts.

The golfers and adherents had a pleasant lunch at the picturesque St. Bernards Hotel near the Mount Tamborine Golf Course prior to teeing off for the Peter Pattison Memorial Golf Tournament at 1.30 pm. The four teams of two were evenly matched, leading to hot competition with much ribaldry, many cheeky comments, and general hilarity. A severe thunderstorm with crashes of lightning at the last hole almost

frightened the intrepid golfers off the course, but valor overcame common sense, and the hole was completed successfully after a brief sheltering under umbrellas. Despite accusations of cheating, foul play, and general mayhem, careful analysis and recounting of the scores revealed the two winners—Loh Ai Tee and Willy Lim. It was a very jolly afternoon, much enjoyed by all who participated.

The group reconvened at 6.00 pm for cocktails and dinner in a nicely decorated private dining room. The conversation was deafening, the subjects diverse, and the happiness index high. Following an excellent meal, I thanked everyone for making the reunion so happy and enjoyable, with special mention of the organizers, Pat and Abas Talib, and announced the winners of the golf trophy and presented their certificates.

Somewhat subdued but happy participants met again for breakfast on Wednesday morning to say farewells before leaving, so bringing to an end another great reunion of the Australian Chapter.

## Canada West

John Cole

The Canada West group held a reunion in late November at a Chinese restaurant in Vancouver. There were 29 attendees, including, for the first time, three participants from Seattle.

After an hour's happy socializing and reminiscing, we enjoyed Szechwan fare. Then, as coordinator, I reviewed AFE matters over the past year, touching on the security of pensions, the new long-term care insurance program, keeping up-to-date with membership fees and contact details, the management set-up at headquarters, the recent flooding in Manila and the call for funding, and of course the death



Fremma Esquejo, Gina Ramirez, Aria Ganesan, Padma Ganesan, Carmen Lanzador, and Maria Luisa Dizon.

of Executive Secretary Emeritus Khan. I noted that Ikramullah Khan's contribution to retirees' welfare had been enormous. I also noted that Canada had been split into two subchapters: Canada West (British Columbia to Manitoba) and Canada East (Ontario to Newfoundland).

After discussion, the reunion became a party. Jenny Majarreis emceed everyone through an amusing brain-teaser quiz on seasonal songs (e.g., Soundless nocturnal period = Silent night) and she required solutions to be sung. Then she had everyone singing more seasonal songs, this time imparting feelings (joy, fear, etc.) drawn from a hat. Finally, there was an artistic challenge—everyone had to do simple drawings, which Jenny eventually revealed to be part of the psychiatrist's standard battery of tests! It was all a lot of fun.

A very good and informative time was had by everyone and, thanks to AFE, links with ADB colleagues and friends were renewed and strengthened.



John Cole, Gina Ramirez, and Baby Ignacio.



Bruce Murray, Alex Jorgensen, and Wei Min Yang.



Lenn Castro, Dolores Telan, Ed Lanzador, Rey Castro, and Baby Ignacio.

## Canada East

Paul Krukowski (ADB 1980–1986)

The Canada East members of AFE–ADB held our yearly reunion on 29 October 2009 at our favorite Chinese restaurant in Ottawa. Including spouses, we were 28 at the dinner, and it was thoroughly enjoyed by all.

The evening commenced with about an hour of drinks and socializing; then dinner was served. Alan Barry, a past Canadian Executive Director at ADB, reviewed matters over the past year, including that Canada's AFE membership of the AFE had been divided into two subchapters (one for Canada West and the other for Canada East), and I was volunteered to coordinate matters for Canada East.

Following dinner, further socializing occurred, and the opportunities to catch up on developments and current events were welcome and found most enjoyable.

## Washington DC

Gene Owens

Members of the Washington DC Chapter moved from summer rains into autumn sunshine with its fall get-together on September 27th at the home of Gene and Ellery Owens. The 20 members and guests included Jill Gale de Villa, AFE-ADB's new Deputy Executive Secretary, who was here in Washington for a special joint session among international financial institutions (IFIs) on pensions, health issues, social communications, and establishing the means for future coordination among the international retiree associations, and NARO's Robert Schoelhammer.

Given the presenters, and the importance of the issues presented, this meeting was one of the richest business sessions I have ever attended with the Washington Group. The full report is available at <http://afe-adb.org>.

1. I presented key issues from the Statement of the Executive Secretary following the Bali Annual Meeting (available at <http://afe-adb.org>).
2. Jill and I reported on the Health Insurance Workshop held at the World Bank the previous Thursday:
  - Many of the other institutions promote the use of national health plans, such as Medicare in the US, to decrease the cost of their plans.
  - Some AFE members based outside the US





object to paying the same premium as those based in the US; WHO is facing the same issue. On the other hand, US citizens with Medicare coverage pay extra premiums for this coverage out of pocket, and make reduced claims on the Vanbreda plan. Differential medical costs on a global basis will continue to be a major issue.

- Some insurance companies in the US provide informational material that can help clients be better informed and make better medical decisions. AFE-ADB should consider disseminating such informational materials.
- If one anticipates a significant medical expense in the US, or when handling medical providers who fail to understand “international health insurance,” dial 1-800-800-6020 and put the provider in touch with Vanbreda, which is usually very responsive.
- New Vanbreda cards are needed, with the new contact numbers and indicating the US providers.

3. Clay Wescott reported on the Pension Workshop:

- Generally, all of the IFI retiree associations at the workshop felt reasonably secure about the financial status of the retirement plans.
- ADB retirees are among the least well informed, given the time lag between pension reports issuance and the dates to which they apply.
- A risk that ADB retirees face is that they do not have timely data and are totally dependent on the good faith of ADB and its shareholders. Many of the other associations have separate trusts, or do not borrow from shareholders, and most have direct representation on their pension committees.

- AFE needs members with professional experience with pensions to advise us and the ADB Pension Committee.
- Regarding the COLA, ADB looks good with a 3% annual increase guaranteed; however, for many, appreciation of local currencies against the dollar is an issue.
- The most significant issue for AFE is representation on the Pension Investment Committee as well as the appointment of alternates to both the Pension Committee and the Investment Committee.

4. Ed Haugh and Bernard Donge reported on the Social Networking, Communications, and Credit Unions Workshop:

- Retirees’ associations are trying to directly engage retirees in networking and communications. The 1818 Society has set up a “speakers’ bureau”—retirees who publicize the World Bank—and a Retirement Active Lifestyle Committee, which holds social events and provides information to promote active lifestyles. Other IFI retiree associations hold regular lunches and outreach sessions to bring in more active members.
- A key issue is to provide retirees with continued access to and information about their former employer through ID cards that allow access to their buildings, dining areas, and fitness centers.
- World Bank has designed a “Survivors Handbook” that informs spouses regarding pension, financial, and medical issues relevant to surviving spouses. AFE will look at providing one for ADB.
- Other retiree associations have access to credit unions that provide loans, credit cards, and financial services at lower cost and at less risk to members. Credit unions are better than banks because they work closely with the membership, and respond to clients and not to a profit motive. AFE needs to investigate options for joining a credit union.
- All retirees associations have websites. Some allow retirees more direct linkages to current operations than others. AFE, which is currently establishing its site, should liberally borrow ideas from other retiree associations’ websites.

5. Robert Schoelhammer updated us on NARO’s and ADB’s latest activities:

- Christopher MacCormac will arrive to take over from Thelma Diaz, who retired as the Head of NARO. Guido Geissler will also be coming to NARO to work on climate change funding.
- The General Capital Increase (GCI), which amounted to a 200% increase, has had significant impacts on ADB's perceived role relative to the global financial crisis. ADB can now increase its level of lending substantially, and will establish a countercyclical facility to assist with recovery from the global crisis.
- There is huge interest in Afghanistan and Pakistan and how to fix the problems there. ADB is now the 2nd largest funding agency in Afghanistan, the only institution that works across borders with Afghanistan, and the largest development partner with Pakistan. NARO had recently participated in a summit meeting, headed by the President of ADB, regarding financial development strategies for these two countries.
- Issues regarding how the GCI will influence staffing in Manila were discussed. About 150 more professional staff may be needed. To a large extent the GCI will be used in line with ADB's Strategy 2020 and climate change goals.
- The GCI and the confluence of development strategies in Asia, including the early positive signs of recovery from the global financial crisis of several Asian members countries, have tended to boost confidence among all ADB staff.

At last, and to the delight of many, the meeting broke for the Thai lunch, Singha beer, and catching up among friends—the essence of our fall get-togethers. We look forward to more visits from the Executive Team of AFE–ADB in Manila, if for no other reason than to give us an excuse for more get-togethers.

Attending Washington DC's Fall Get-Together were Tita Acupanda, Etel Bereslawski, Bernard and Natalie Donge, Cinnamon Dornsife, Ed Haugh, Anita Kartadjoemena and Michael McDonald, Gilda Ordoñez-Baric, Gene and Ellery Owens, Regina H. Pan and Christina Pan Lee, Bill Peterson, Karti and Indira Sandilya, Robert Schoellhammer, Josephina Yabes Smith, Jill Gale de Villa, Clay Wescott, and Steve Whitmer.

Visit AFE online at  
[www.afe-adb.org](http://www.afe-adb.org)

## Europe

Roland Engelbart (ADB 1981–1984) and Günter Hecker (ADB 1979–2002)

The 12th chapter meeting was held in Bremen on 4–7 September. The excellent tour hosts were Roland and Clarissa Engelbart.

**Bremen.** Bremen is an old settlement in Northern Germany. Full market privilege was conferred on the town in 965 AD, and in 1358 it joined the Hanseatic League, an association of merchant cities in Northern Europe. For much of its history, Bremen was a city republic governed by merchants.

Today, Bremen (with 560,000 inhabitants) and its sister city Bremerhaven (with 120,000) make up the smallest German federal state. Located 60 km from the North Sea on the Weser River, Bremen is Germany's second largest port after Hamburg. It is also an important industrial center (Mercedes production, Ariane rocket and engine components, Airbus parts). Shipyard activity has almost vanished, however; containerization and the use of larger ships have seen port activities move downstream to Bremerhaven.

**The Reunion.** On Friday participants arrived from Austria, France, Germany, Luxembourg, Netherlands, Switzerland, the UK, and even Thailand and the Philippines. Most stayed in the Swissôtel, in the city center.

The reunion started with a buffet dinner at the Ratskeller underneath the City Hall, built in the 17th century. Patrons sit at long oak tables surrounded by huge wine barrels built into the walls. The Ratskeller serves only German wine. It has a stock of more than 600 wines including one dating to 1730 but supposedly still drinkable. Among many prominent visitors have been Heinrich Heine and Friedrich Engels.

**A Walk through History.** The Saturday program started with a walk through the historic center, beginning at the Market Square, often called the “neat living room” by Bremeners. The square is dominated by the 600-year-old City Hall, which displays a beautiful Renaissance façade, rich ornamentation, fine statues, and a copper roof. Tourists always gather round a modern sculpture known as the Bremen Town Musicians.

A statue of Roland, erected in 1404, is in front of the City Hall. The figure has a youthful face and a secretive smile. With a drawn and upright sword, Roland faces the cathedral as a symbol of



independence of the Bremen citizens against the archbishop's claim to supremacy over the city.

Opposite the City Hall is the Schütting, traditionally the seat of the merchants and today the Chamber of Commerce. The doorway shows the motto of the Bremen merchants: "Buten und binnen, wagen und winnen" which, in low German, means outside and inside, venture and win.

The group next visited St. Peter's Cathedral, designed in Gothic style with 98-meter high twin towers. Passing by the Schütting, a small alleyway led the group to the Böttcherstrasse, originally a small street where barrel makers lived. Around 1900, Ludwig Roselius, a coffee maker and benefactor of the arts, bought all the houses and converted them into a delightful street museum. The expressionist landscape of façades executed with colored glass, steel, and bricks reflects well the spirit of Jugendstil, the then-popular Arts and Crafts Movement.

The next stop, along the Weser riverbank, was Bremen's oldest quarter, the Schnoor. The name derives from the word for string. Indeed, the small houses along the narrow streets really do look like pearls on a string. The Schnoor has become Bremen's most popular tourist attraction, but it has not degenerated into being solely a museum. The old houses with their artists' studios, art galleries, cafés, restaurants, and cosy taverns create a pretty and peaceful atmosphere.

**Discovery and Revelry.**

After a break for an Italian lunch—inevitably a big pizza—a coach took the group on a 2-hour guided tour through parts of Bremen, including the university area and the technology park. The Focke Museum, dedicated to Bremen's history, was another brief port of call. All in all, the group realized that airiness and spaciousness are characteristics of the city, as Bremen possesses many parks and open spaces and close links to the surrounding countryside.



Roland Engelbart at the Statue of Roland.



In front of Bremen's Chamber of Commerce: Hans-Juergen Springer, Jan Wijenberg, Hertha Escher, Thomas Eggenberger, Hans-Martin Schmid, Lilo Kahl, Hermann Escher, Rose de Vries-Bal, Siward de Vries, Gerhard Kahl, Monique Freiwald, Lek Lepper, Peter Bodora, Dieter Bodora, Günther Schulz, Enrie Hecker, Helga Schulz-Berlin, Ulf Freiwald, Gisela Carstensen, Gertrud Koehling, Paul Koehling, Peter von Brevern, Friedrike Kantner, Elizabeth Reyes, Marlis von Brevern, Clarissa Engelbart, Gudrun Varwig, Enno Carstensen, Eva van der Elst, Günter Hecker, Aafje Schmid, Eric van der Elst, Marianne Wijenberg, and Roland Engelbart.





Europe chapter's business meeting (L-R): Hans-Juergen Springer, Günter Hecker, Günther Schulz, and Roland Engelbart.

Saturday evening was dedicated to the traditional Europe Chapter Gala Dinner in the Swissôtel ballroom. Before the dinner, participants commemorated the passing away of Ikramullah Khan with a moment of silence.

Short speeches between courses were delivered. Roland, the host, summarized the traditional festivities unique to Bremen. The Schaffermahlzeit, the most important, is a banquet with prominent guests coming from commerce, industry, culture, and politics. It is arranged every February by a charitable foundation for Bremen's seafarers and is celebrated in the Upper Hall of the City Hall. The banquet is considered to be the oldest fraternity meal in the world, first held in 1545.

On Sunday morning, the program continued with an excursion by train to Bremerhaven. A double-decker bus took the group on a 2-hour guided tour through the port area. Container traffic, transport of heavy-duty equipment, and the shipment of cars are the pillars of Bremerhaven's harbor business. The container quay is 5 km long, and there is parking for 80,000 cars. Bremerhaven is Europe's largest port for the import and export of new cars for Europe, the US, and East and Southeast Asia.

However, as the tour guide explained, in 2009, after a long period of success, the clearance of container freight ships was down about 20%, and car cargo by even more. He also pointed out the "condominiums for bachelors." (We later found out he meant the row of modern condominiums along the Port perimeter.)

Next was the German Emigration House, where more than 7 million migrants from Germany and East Europe gathered to sail for the New World. The museum provides a lively impression of how the emigrants must have felt—the farewell in Bremerhaven, accommodation on board, arrival at Ellis Island, the receiving station in front of Manhattan Island. The Gallery explains the emigration and has biographies of emigrants. It also offers a database for family research on passengers.

Dinner was taken the Jürgenshof, a farmhouse-type restaurant with German cuisine, near the meadows of the Weser.

**Business Meeting and Farewells.** On Monday morning, the AFE-ADB Business Meeting was held. (The minutes have been circulated.) Participants at the gala dinner had suggested that Mehbooba Khan be accorded honorary membership in the Europe Chapter. This was confirmed. (She subsequently accepted.)

Peter Bodora, known for his forceful and imaginative planning, gracefully volunteered to organize next year's reunion in Dresden. When reminded that we had grown 7 years older since his splendidly organized Lübbenau Reunion, covering wandering in open-pit coalmines, discussions on privatization with the electricity company Vattenfall, and a boat trip through the Spreewald (the Sundarbans of Germany), the need to also recruit new retirees was recognized.

After the reunion, Roland and Clarissa invited those remaining in Bremen to their old Bremen town house. Sitting in the living room or on the balcony with a cup of coffee or tea and German cake at hand, everybody felt relaxed, happy, and thankful that AFE provides opportunities for reunions.

See you in Dresden!

## India

### Barin Ganguli (ADB 1979–1995)



The AFE-ADB India Chapter celebrated its 20th year anniversary in a special meeting on Saturday, 1 December, in New Delhi. Before the agenda was discussed, Ramdass Keswani, current President of the India Chapter, announced that he had received 17 checks, amounting to \$1,742, which he sent to Hans-Juergen Springer, executive secretary, for the Philippine flood relief fund. He further

said that the executive secretary will send official receipts to individual member contributors.

As Country Coordinator, I spoke to celebrate the occasion. The members went through memory lane. Mr. Juneja recounted how, as the first President, he, along with S. Srivastava and Ramdass Keswani, nurtured the AFE-ADB India Chapter in its infancy. P.K. Lahiri also recounted his experience as the second President of the Chapter. It was noted that the AFE-ADB India Chapter came into existence before the AFE-ADB Manila was

formed. Hence, India Chapter Rules and Regulations were prepared and the provision of a life membership was introduced. After the formation of the overall AFE-ADB, AFE-ADB India became a constituent of the whole, although the practice of admitting life membership continues.

The meeting admitted the following recent retirees as life members of the AFE-ADB India Chapter—Motilal Sharma, Sudipto Mundle, Rakesh Gupta, Arvind Mathur, and Farookh Kapadia.

The Meeting further decided to hold the next Annual Meeting of the AFE-ADB India Chapter in Gauhati, the home town of Jayanta Madhab, sometime in March 2010.

## Indonesia

### Dimiyati Nangju (ADB 1978–2001)

During 2009, the following members continued to serve as officers for the Indonesian Chapter: myself, as country coordinator; Roslaini Rasuman, as deputy country coordinator, and Sonya Pamoedjo, as treasurer.

**Social and Business Meetings.** The Chapter organized four social and/or business meetings during 2009.

A well-attended business and social meeting on 29 March at the Ambhara Hotel in Kebayoran Baru, Jakarta, was hosted by Dr. and Mrs. Pamoedjo Rahardjo. The main issue discussed was the preparation for attending the ADB Annual Meeting in Bali in May.

On 7 June in Gadog, Ciawi, Mr. and Mrs. Soegito Sastromidjojo hosted a party in connection with her birthday. Many AFE members and former Indonesian Embassy diplomats from Manila attended, sang, and danced to live music.

A.A. Sidarto hosted a business and social meeting on 11 October in the 5-star Gran Melia Hotel in Kuningan, Jakarta. Many members attended, and everybody enjoyed the wide variety of delicious food. The main issue discussed was the preparation for the annual general meeting

to be held in December.

The annual general meeting was held on 6 December in Dapur Sunda Restaurant in Jalan Cipete Raya, Jakarta, to discuss the annual report for 2009.

### Attendance in Bali.

The Indonesian Chapter sent a large delegation to attend the ADB Annual Meeting and the AFE-ADB Annual General Meeting because they were held in our country. The following members attended the Bali meetings on 2–5 May 2009: Mr. and Mrs. Dimiyati Nangju, Mr. and Mrs. Abdullah Rasuman, Soeksmono B. Martokoesoemo and Chaya Soeksmono, Mr. and Mrs. M. Soerakoesoemah, Mr. and Mrs. Soegito Sastromidjojo, Mr. and Mrs. Normin Pakpahan, and Lucy Pandjaitan.

The Deputy Minister of Finance, Anggito Abimanyu, composed a special song dedicated to ADB and titled "From Asia to the World." When it was performed at the opening ceremony and the cocktail party hosted by the Minister of Finance on 4 May, the song was greatly admired by delegates and observers because of its beauty and its clear message



Dimiyati and Nora Nangju celebrated their 39th wedding anniversary on 5 December 2009.



Participants in the chapter's annual general meeting, 6 December 2009, in Jakarta.



about ADB's vision and mission in the Asia and Pacific Region.

**Membership Status.** The Chapter lost one member in 2009—Mrs Soeksmono, who passed away in June after a prolonged illness; but we gained one member—Mr Abuzar Asra, who retired from ADB in July. However, the number of active members has been slowly declining, as some older members are unable to attend social and business meetings, while few new members are joining our chapter. This presents a challenge to sustaining the activities of the chapter in the future.

**Finance.** The chapter noted that both AFE overall and AFE-Indonesia need to determine what to do with accumulated funds.

## Japan

### Eiji Kobayashi (ADB 1968–1994)

Japanese members met in Tokyo's Grand Palace Hotel on 10 January 2010 for our annual Barrio Fiesta gathering. This was the 29th meeting, attended by 48 former colleagues and spouses, honoring former President Taroichi Yoshida.

President and Mrs Yoshida were pleased to see the members once again, ushering in the coming of the new year. This year's gathering was an especially

happy occasion, celebrating President Yoshida turning 90 years of age in December 2009. He recalled his hard wartime experience in Maizuru and Fukui, cities facing the Japan Sea. He twice risked his life during attacks by enemy fighter and bomber planes. Having suffered illness and malnutrition, his doctor advised him that he would not be able to live beyond 40 years. He is now fit despite his age and is still able to drive around his neighborhood with caution.

Mr Segawa proposed a toast, wishing a happy new year for everybody. He remembered that the late Former President of the Republic of Korea, Mr Kim Dae-Jung, was abducted by KCIA agents from this hotel in August 1973.

After lunch, Mr Sato spoke on his activities at the National Diet as its member. Mr Takashi Kobayashi reported on his hotel reconstruction project. He advised members that the Barrio Fiesta will be able to return to his hotel in 2 years, upon its completion.

Thanks to Messrs Hida, Takahashi, Yoshitomi, and Mitsuhashi, the organizers for the year, the happy fiesta was concluded. This annual event gives members a good opportunity to recall their Manila days. Time flies indeed!

Visit AFE online at  
[www.afe-adb.org](http://www.afe-adb.org)



Sitting (L–R): Mrs Yoshitomi, Mrs Hida, Yasuko Sunagawa, Mrs Kanamoto, Isao Kanamoto, Michiko Segawa, Taroichi Yoshida, Mrs Yoshida, Haruhisa Segawa, Mrs Watanabe, Mrs and Mr Kunio Takase, Mr. Yukinori Watanabe and Mr Yuzo Akatsuka. Standing (2nd row): Hiroshi Hida, Masataka Yoshitomi, Mrs Furuki, Mrs Yajima, Mrs Nakagawa, Mrs Sato, Mrs Fuse, Mrs Nomoto, Mrs Taniguchi, Mrs Arao Abe, Mrs Takashi Kobayashi and Mrs Kariya. Standing (3rd row): Makoto Sunagawa, Takashi Kobayashi, Hideki Abe, Masaaki Kushida, Takashi Yajima, Mrs Nagase, Eiji Kobayashi, Arao Abe, Michiko Sugisaki, Shigemitsu Sugisaki and Mrs Takahashi and Shoji Takahashi. Standing (4th row): Shinichiro Mitsuhashi, Takashi Taniguchi, Hirosumi Takahashi, Akio Sato, Yasuhide Nakagawa, Tomohiro Ishiguro, Tomiaki Nagase, Yorio Murakami, Motomu Kariya, and Fumio Yasunaga.



# New York–New Jersey

Nannette Guinto Amorado (ADB 1982–2007)



*Note: This year's AFE-ADB New York–New Jersey Chapter chairperson is Nannette Guinto Amorado, formerly with the Office of the Auditor General in ADB. Nannette now works with the Office of Audit and Investigations of the United Nations Development Programme's headquarters in New York. Nannette aims to continue the good work of*

*forging the ties that bind the ADB family. She kicked this off with a successful chapter reunion that included a speech from the Philippine Ambassador to the UN, Hilario Davide, Jr.*

The AFE-ADB New York–New Jersey Chapter held its 2009 reunion, with 85 former ADB staff and friends attending. The reunion was held on 24 October at the Royal Regency Hotel in Yonkers.

Despite the heavy rain, the party was well attended, and included friends all the way from Manila and the

Hague, plus Chicago, Los Angeles, and the Washington DC area. Special guest, His Excellency Ambassador Hilario Davide, Jr., spoke enthusiastically of the long-standing relationship between the Philippines and ADB. He mentioned especially the ADB-supported technical assistance for the Action Program for Judicial Reform. Ambassador Davide is the Permanent Representative of the Republic of the Philippines to the United Nations. Executive Secretary Hans-Juergen Springer, together with his lovely wife, Elizabeth, also graced the occasion. Hans provided an update on AFE's latest activities and invited us to the 2010 annual meeting to be held in Tashkent, Uzbekistan.

The evening was another great opportunity to renew friendship. Apart from the never-ending greetings, we enjoyed nonstop dancing on a large dance floor and exciting dancing music! We held a musical chairs game, where selected men (who were supposed to have no heart problem or arthritis) were the chairs and women fought to stay in the game for as long as they could. Some men had to be booted out, reluctantly. There was also a beauty pageant-cum-parade of nations, where the best-dressed Miss Egypt won hands down. Two shared their gift of music—Helen Veloso and Rhona Mae Amorado—and entertained the crowd with their beautiful voices. The hotel food was sumptuous and more than enough for everyone. Wine and other drinks were overflowing.



Sitting (L–R): Ruth Esmilio, Lulu Marzan, Emma Dumalag, Nannette Guinto Amorado (2009 Chairperson), H.E. Ambassador Hilario Davide, Jr., Liz Springer, Hans-Juergen Springer. Standing (L–R): Ditas Miranda, Lysa Manguiat, Totie Torellino, Lorna del Rosario, Cel Argayoso, Thelma Altiveros, Carmelita Banting, Margie Baccay, Precy Lizarondo, Medy Hain, Jo Yabes-Smith, Mia Jose, Nena Villena-Tanedo, Elenita Mignini, Dina Villaluz, Helen Veloso, Cholly Mauricio, Tita Acupanda, Winnie Francisco, Mila Simolde, Ellen Dee, Chato O'Buckley, Oscar Colmenar. Not in photo: Annie Yacub-Romero, Florie Flores, Wilma Buenaobra, Raffy Buenaobra, Tina Aquino, Chat Cortes, Florence Rafulowitz.

Each former ADB staff member received a little take-home gift and colorful souvenir journal. Some lucky people won cash in the 30/70 raffle and others got consolation prizes. Upon seeing the impact of Typhoon Ondoy on TV, I converted the usual 50/50 party raffle into a 30/70 raffle, with 70% of the collections to be donated to the typhoon victims. A number of ex-ADB staff members generously responded to the call for donations! A good sum—\$2,545, including post-party additions—was turned over to AFE and ABS-CBN Foundation, Inc. This gave everyone (including those who could not come to the party and non-former-ADB staff, but friends of the Philippines) a sense of fulfillment, having helped unfortunate Filipino flood victims one way or the other. This, after all, is what ADB stands for, as the prime development bank in the Asia and Pacific region, always ready to help humanity and alleviate poverty.

Thanks to all who helped make the event a success, especially Emma Dumalag; Ruth Esmilio; and, of course, Chato Ledonio O'Buckley, the energetic emcee, who pulled everything together so smoothly. Next year's reunion will be under the able hands of Elenita Mignini.

## Philippines

### Gam de Armas (ADB 1981–2000)



After over a month of typhoons that took hundreds of lives and caused billions of pesos of infrastructure and property damage—with many AFE members included among those affected—the Philippine Chapter held its annual get-together on Thursday, 26 November 2009 at ADB's

Executive Dining Room. The event had the appropriate theme "Unity and Harmony... (Amidst Trying Times)". The evening's motif, dedicated to members affected by the disastrous floods, was "black and white," connoting hope after every loss or setback.

As Country Coordinator, I called the business meeting to order at 5:00 PM. Roby Espiritu delivered the invocation followed by my welcome remarks. Hans-Juergen Springer gave the Executive Secretary's address, reporting on initiatives approved during the AFE Annual General Meeting in Bali in May 2009. He noted the passing of two people important to AFE:

1. Kimimasa Tarumizu, ADB President from 1989 to 1993 and a staunch supporter of AFE, who died on 21 February 2009 at the age of 78; and
2. M. Ikramullah Khan, AFE Founder and Executive Secretary Emeritus, who died on 30 July in London at age 83.

Jill Gale de Villa, deputy executive secretary, provided a brief update on pension, health matters, and the newsletter.

I showed slides of Typhoon Ondoy's damage and noted the steps taken in response by the Philippine Chapter. The extent of the effects of the flood on the members, many from the East Group, was assessed. Many members responded with offers to assist. A giant replica of the \$1,000 check from the Fil-Am community of Phoenix, Arizona was presented. The donation was made possible through the efforts of former ADB staff Ethel Luzario, who spearheaded the Sagip Ondoy 2009 fundraising concert in Phoenix. Other donors were acknowledged, led by the South Group and ADB OBG (Oldies But Goodies), who initiated the chapter's fundraising efforts with a P42,000 contribution. During the evening, three balikbayans gave a total of P40,000. A resolution of thanks for Ethel Luzario and Sagip Ondoy 2009 was passed. Roland Valenciano, who, with his family, had been trapped on a rooftop for 2 days at the height of the floods, detailed his experience then and fighting deadly leptospirosis as a result of exposure to the contaminated waters.

The members then formally approved the creation of the Metro Manila South, Central, West, North, and East groups, for better and faster communication, and closer interaction. The five groups played a vital role during the disastrous floods. I presented the group coordinators and thanked them for their contributions. I thanked this year's get-together committee, chaired by Lita Gamboa with Rosie Luistro and Ophie Sta. Ana as members. Other members of the South Group ably assisted, manning the registration table, logging and labeling the numerous auction items and raffles prizes, and assisting the emcees. Before the business meeting ended, special tribute was paid to M. Ikramullah Khan, AFE-ADB Founder and Executive Secretary for 22 years until 2008.

The entertainment portion of the program started with a message from Lita Gamboa and a minute of silent prayer for members who had passed away. Everyone then trooped to the banquet tables for a delicious Italian cocktail-buffet. Emcees for the evening were Rosie Luistro and Steve Banta, who kept the audience on their toes.

Raffle prizes were awarded throughout the program. Items brought by members were auctioned to raise additional funds for the victims of Typhoon





Seated (front row, L-R): Emma Jimenez, BJ Elizaga, Severino Hombre, Tet Abaza, Liza Vitangcol, Gam De Armas, Lilia Orzal, Julie Guevara, Eva Barcelona, Beth Cabuay, Nes Diasanta, Ronald Chan. (2nd row): Vicki De Armas, Zenaida Lizarondo, Tina Asilom, Vivian Quiroz, Connie Baylon, Lou de Belen, Rosie Luistro, Lita Gamboa, Raquel Cabiles, Susan Padolina, Lina Villagracia, Lilia Malaqui, Yollie Asuncion, Linda Santos. Standing: Roger Asuncion, Reynaldo Luistro, Rory Aragon, Tony Riego, Nieves Callanta, Nena Gonzales-Maralit, Gloria Cruz, Ched Raña, Leony Sanots, Marie Gomez, Ophie Sta. Ana, Roland Valenciano, Marynella Cruz, Johnny Laluz, Carmen Bontia, Mirla Limpo, Manny Faelnar, Danny Orzal, Joven Roberto, Tess Salazar, Anita Quisumbing, and Dina Cerrada.

Ondoy. A cookbook that had a floor value of P150 was finally won by Ronald Chan for P1,000 after about 10 bids. A 6" personal fan had a floor price of P200, and BJ Elizaga, who had lost in a previous bid for a native handbag, was not about to lose again and topped the bidding with P400. Total proceeds from the auction came to P6,130. Line dancing spiced the evening and was easily the hit of the night, with over 40 people participating.

Midway in the program, two AFE members were given special mention: Ethel Luzario, for being voted among the 100 Most Influential Filipinas in the US; and Jun Trasporto, for being among the top 100 bowling coaches in the world and among the top 10 international coaches (see the articles on p.35 and p.40). Spotted during the evening were Katie Blanco, Babie Bolaño, and Yolly Laurel from the US.

Ophie Sta. Ana, who was in charge of registration, said total attendance was 156 (28 former professional and 128 former local staff), a record! The East Group will take charge of next year's year-end get-together.

Everyone, members and spouses, left the gathering happy and with the thought that members affected by the disastrous floods would soon be receiving some financial assistance to help them recover—an amount that may be small in comparison with their material losses but big in terms of love and concern shown by their co-AFE members!

## Finland Newsflash

Robert Wihtol

On 21 July 2009, Finnish retirees and several current ADB employees got together for lunch at the home of Heikki Noro. The weather was warm and sunny, and lunch was followed by a lazy afternoon of reminiscing about ADB, colleagues, and life in Manila, and, of course, sauna and swimming. A good time was had by all.



(L-R): Aimo Juhola, Kari Saari, Anneli Saari, Heikki Noro, Marites Saari, Robert Wihtol, Jyrki Wartiovaara, Erkki Jappinen, and Arto Ahonen.



# People, Places, and Passages

## Lifeboats—AFE Helps Manila Flood Victims

*Editor's note: In the wake of the devastating floods caused by typhoon Ondoy (Ketsana) in Metro Manila on 26 September 2009, AFE members responded generously to AFE's appeal for funds to alleviate the suffering, donating a total of P527,248 (about \$11,400). AFE passed on P330,915 of this to ADB's Staff Community Fund (SCF) to assist very poor families in Manila who remained seriously affected by the floodwaters in late 2009 and early 2010. In addition, P196,333 was given to flood-affected AFE members who needed assistance. Gam de Armas, Philippine chapter cwoordinator, and the Philippine Chapter were heavily involved in assisting the AFE members from the start. Gam's blow-by-blow account gives a very personal sense of the tragedy.*

### Assisting the Poorest

David Parker (ADB 1976–2004)

The money that was provided through the SCF was given to two well-organized channels, the Virlanie Foundation, Inc. in Quiapo (P55,000) and the New Faith Family Children's Home in Cainta, Metro Manila (P275,915), for assisting many poor families who remained seriously affected by the floods.



(L-R): Jill Gale de Villa from AFE-ADB; Jeff Long, Director of the New Faith Family Children's Home Foundation; and Sue Hooper and Christine Infantado from SCF, at the check handover to New Faith Family Children's Home on 22 December 2009.

**Virlanie Foundation, Inc.** The P55,000 given to the Virlani Foundation bought basic food supplies that were presented in ADB tote bags to 33 very poor flood-affected families at the Virlanie Foundation Open Day Center in Quiapo on Saturday, 19 December 2009. Children also received stuffed toys donated by ADB staff members. AFE's Hans-Juergen Springer and David Parker, the SCF's Sue Hooper and Karen Lane, and Yin Yin Lam participated in presenting the food bags and toys, and watched as the parents and children alike delighted in the games and entertainment.

Virlanie Foundation is a private, nonsectarian nongovernment organization (NGO) in Manila. Its mission is to care for very poor children needing special protection, including abandoned children, street beggars, young prostitutes, physically and emotionally battered children, mentally handicapped children, and incest victims. Virlanie gives them shelter, food,



Children receiving toys and food at the Virlanie Foundation Open Day Center on 19 December 2009.



## Typhoon Ondoy (Ketsana)

Below: As the water rose, people improvised with various forms of transport to go home, or to get away from home.





education, and love, and provides developmental services to help them become self-reliant, productive, independent individuals using a family atmosphere and reintegration to normal community life. Virliané's vision is to empower the children with hope for a bright future.

Many of the beneficiaries of the Virliané Foundation's outreach programs lost almost everything in the floods that followed typhoon Ondoy. The happy faces of the recipients of the food supplies and gifts at the Open Day Center on 19 December 2009, and the gusto with which both adults and children participated in the games and entertainment, were a heart-warming sight, especially given the hardships they have endured.

**New Faith Family Children's Home Foundation, Inc.** The New Faith Family Children's Home is a home for abandoned, neglected, and abused children. It was started in February 2005 by Jeff and Colene Long, missionaries from the US. Now, 38 children live in the orphanage. The Children's Home was not affected by the floods, as it is on a hill, but most of the surrounding communities were devastated, as Cainta was one of the worst affected areas. After the floods, the Children's Home was feeding about 1,200 people, particularly targeting children, and looking after their basic medical needs. Many of the people were living in terrible circumstances, with no hope of returning home for several weeks.

The remaining P275,915 of AFE members' donations that were passed on to the SCF was handed to Jeff Long in two separate checks. He received the first check, for P141,334 at ADB headquarters. The proceeds were used to buy rice, vegetables, canned



(L-R): David Parker, Jeff Long, and Hans-Juergen Springer—handing the second check to the New Faith Family Children's Home on 30 January 2010.

meat, cooking oil, and basic necessities such as soap, toothpaste, and shampoo.

Hans-Juergen Springer, the SCF's Sue Hooper, and I gave Jeff the second check, for P134,581, on 30 January 2010 when we visited the Children's Home. Proceeds from the check will meet a large part of the construction cost of separate small, durable homes for three families seriously affected by the floods as part of the Foundation's outreach to the neighboring communities. During the visit, Jeff Long showed us around, explaining the Foundation's work in detail. We were greatly impressed by Jeff's accomplishments of establishing and running the orphanage and by



Mealtime at the New Faith Family Children's Home.



the contented expressions of the children living there. Hans, Sue, and I participated in serving nutritious meals to a long line of children from the nearby communities. During a walk along narrow paths through the community served by the Foundation, Jeff showed us two small homes typical of the ones planned to be constructed from the proceeds of the second check.

## Rescuing Our Own: AFE Members Under Water

Gam de Armas

**Friday, 25 September**—the rains start, then increase in intensity Saturday morning. Reports of flooding fill the airwaves as the waters reach waist- and then neck-deep even in areas not normally prone to flooding.

**Sunday, 27 Sept, 11:00**—I text all 15 group coordinators and subcoordinators, asking their status and to contact their members, especially those living in low-lying areas, to find out their situations and if they needed help. No response from the East Group, so I start calling them, but have limited success.

12:38—Carmen Dimayuga responds, “Yes, our house was flooded. Phone lines down since yesterday.”

13:31—AFE’s assistant Jo Aquino forwards e-mail from Myrna Badillo: “Roland Valenciano, a former Staff Council member and now a member of the AFE-ADB texted me asking for help. He is trapped in his house in West Floodway, Cainta and has been eating only noodles and eggs since Saturday. He said the ground floor of his house is deep in floodwater until today. Kindly forward to other retirees who live nearby and may be able to assist.” I try calling Rolly but the lines are dead.

**Monday, 28 Sept, 13:48**—I send an e-mail and text message to Johnny Sy of ABS-CBN and Commander Eduardo Alvarez, National Director of the Philippine Coast Guard Auxiliary (PCGA) re. Rolly Valenciano’s predicament, asking if they could help.



Filo Pante took this image while trying to get to his mother’s house, which had been submerged almost to the second floor. He finally reached her house at midnight wading through waist-deep water to deliver her insulin.

14:26—Ed Alvarez replies that my message has been “forwarded to both the Philippine Coast Guard action center and the PCGA rescue team” operating in Cainta.”

16:06—I e-mail all Philippine Chapter Group Coordinators re Rolly’s plight, asking if they have called their members in the flood-stricken areas, and to provide feedback.

16:45—Lita Gamboa replies that they could not contact Letty Supangco, Tessie Salazar, and Ely Fuentes, and that ADB Security is helping to locate them.



Marianos rescuing what can be saved.



Damage in Mrs Pante’s house.



**Tuesday, 29 Sept, 12:18**—No update on the 3 AFE members Lita reported; I ask Ed Alvarez to help locate them.

14:54—Myrna Badillo informs me Rolly was rescued by the Coast Guard, and sends his thanks to me, AFE, and all who helped. Wow, what a relief!

15:09—exADBfriends Yahoo group carries a report sharing the harrowing experience of Emelita Sanchez-Deza, active staff: "...the most trying times in my life... lost my house, car, everything I have put up for the last 20 years...managed to go to the roof all night with just our clothes on, braved the rain and coldness and danger of falling down cuz my roof is very steep....you can hear people shouting and trapped in their homes... only thing I saved is my cell phone and wallet...am here in ADB for the night...nowhere to go." (The exADBfriends Yahoo group served as a clearinghouse for many reports involving former ADB staff in the days that followed, providing useful updates and exchanges.)

Very limited reports from the group coordinators; I worry that they too have been badly affected and thus are unable to report. My suspicion turns out to be true!

19:45—Ophie Sta. Ana, a group coordinator from the South, reports that Raquel Cabiles, lead coordinator for the East Group (Antipolo, Binangonan, Montalban, San Mateo, Pasig, Cainta, Pateros, Marikina, Taguig, and Taytay) had evacuated to her sister's house in Makati, leaving her car submerged (it would take her about 2 months to get her car repaired). Ely Fuentes is staying at a neighbor's house with a second floor. Ramon Reyes' house in Cainta has water almost up to the second floor.

**Thursday, 1 Oct**—Raquel reports: "...had been stranded on Sat., 26 Sept, spent the night on a stalled truck outside gate 3 of Vista Verde Executive Village... left my car on Imelda Avenue just outside Gate 3 when floodwaters entered it...able to go home Sunday 4 PM through the courtesy of two men who made an improvised raft from banana trunks tied together...got on the raft with an 11 year old boy ... with the men (pulling it through chest-high water)."

Susan Padolina, coordinator for Pasig, reports that water in her house had been shoulder high, damaging all her appliances, cabinets, and doors. She is still clearing out the mud and washing the clothes soaked by the floods.

Former ADB staff living abroad (e.g., Meditte Ulnagan) use our Philippine Chapter network to get through to their immediate relatives staying in the affected areas.

Hans asks how we could help our affected members. Perhaps rehabilitation assistance? To do this, we needed to know the extent of damage they suffered. I assure Hans that information gathering has started using the group coordinators and the "text brigade," proceeding slowly due to power outage and flood impacts on the group coordinators.

**Saturday, 3 October**, I call for an emergency meeting of the group coordinators on the 6th. On the 5th, I issue a survey form to Philippine Chapter members to find out the extent of damage suffered and whether and how unaffected members could help. During the group coordinators' meeting, with Hans present, we map out plans for further

assessing Ondoy's effects on members, getting help from ADB, and possibly giving financial assistance to those badly hit and how to source the funds.

### Continuing Efforts.

Several AFE members (including Mario Alarcio, George Custodio, Elvie Estavillo, Richard Eyre, Meg Lim, Tess Rivera, Souphanh Savady, and the South Group members) had e-mailed their intention to assist. We set up an account for donations. Support would also come from our chapters and



Ada Santos' home—inside and in the street outside.

friends abroad. Members were also helping each other. Lynn Garcia lent her pick-up to Emma Jimenez, whose car had to be repaired. Others braved the mud and floods to reach members to ascertain their condition.

A chilling story surfaced when Raquel Cabilles and I reached some of our members in Cainta. Precioso Gutierrez had almost lost his wife, who is bedridden and on a ventilator. Raging waters entered his house; swept away belongings, including precious documents; and rose to neck deep, threatening to engulf the bedroom where Priz's wife was. Then power was cut off... it was dark...his wife's ventilator had to be pumped by hand. Priz was in a dilemma: if the waters kept rising, how could he evacuate his wife? Fortunately, heaven intervened and the floodwaters stopped rising.

The AFE survey showed that, on the average, floodwaters inside affected members' houses were waist deep (and in some cases 10–12 feet deep), damaging most appliances and furniture on the ground floor. Repairs of submerged cars cost P9,000–P90,000. Irreplaceable documents and pictures were damaged or lost. We are thankful that not a single life was lost!

And the funds AFE raised helped those affected a bit financially and a lot morally, through the knowledge that we care. Late December, 55 badly affected AFE members, all former local staff from the Philippine Chapter, received checks to help make the new year bright, the amounts of the checks varying according to the severity of damage suffered.

The following people and groups extended financial help (apologies to anyone inadvertently left out):

Tek Ablaza  
Gam de Armas  
Jess Arnuco  
Yoly Asuncion  
Krishna Bagal  
Sheela Bambawale  
Ranjit Banerjee  
Steve Banta  
Cindy Bares  
Connie Baylon  
Lou de Belen  
Laxmi Bhat  
Kathie Blanco  
Baby Bolaño

Carmen Bontia  
Robin Broadway  
Dieter Bucher  
Beth Cabuya  
Nieves Callanta  
Baby Girl Cruz  
Jill Gale de Villa  
V.V. Desai  
Carmen Dimayuga  
Vinh Dinh,  
N.Cinnamon Dornsife  
Elvie Estavillo  
Richard Eyre  
Manny Faelnar

The aftermath...Clockwise from left: flotsam and jetsam clog the streets, mud on a rooftop, a boy goes for supplies, damaged school supplies.





Lina Falcon's Niece  
 Florecita Flores  
 Ian Boyd Fox  
 Lita Gamboa  
 Barin Ganguli  
 Rakesh Gupta  
 Roy Hauge  
 Robert Hood  
 Josefina Ibe  
 Grace Ilogon  
 S.V.S. Juneja  
 Malti Kelkar  
 Ramdass Keswani  
 Eiji Kobayashi  
 Hiroyoshi Kurihara  
 P.K. Lahiri  
 Yolanda Langlois

Lyn Lapid  
 Yolly Laurel  
 Bong-Suh Lee  
 Dang Fook Lee  
 Etienne Linard  
 Precinia Lizarondo  
 Rosie Luistro  
 Lilia Malaqui  
 Arvind Mathur  
 Edith Okada  
 Danny & Lilia Orzal  
 Boyet Pamintuan  
 David Parker  
 M.S. Parthasarathy  
 Leonor Pascual  
 Ruth Pitpitan  
 Nikhilesh Prasad

Anita Quisumbing  
 Otto Raggambi  
 M.S. Rajan  
 V.S. Rao  
 Tessie Rivera  
 Edna Mae Ronas  
 Eva Sakharet  
 Luz Sanchez  
 Ada Santos  
 Soupanh Savady  
 Devinder Singh  
 Hans-Juergen Springer  
 Ophie Sta. Ana  
 Chato Suarez  
 Peter Sullivan  
 Min Tang  
 Hellen Tobin

Remigio Torres  
 K. Venkatesan  
 Thomas Walsh  
 Eichi Watanabe  
 Karin Marie Wentz  
 Christine Whitlam  
 Yuen Loh Yee  
 Rinus Zijsvelt  
 ADB OBG  
 Europe Chapter  
 New York–New Jersey Chapter  
 SAGIP ONDOY 2009  
 and several people who wish  
 to remain anonymous.

*Life goes on...*L–R: Clockwise from left: a flood-muddy boy, a man salvages wood from a gutted home, people clean up in muddy waters, a woman carries emergency relief supplies home; Below, two girls beside a truck of relief goods show the resilient Filipino spirit.



*Editor's note: The Staff Community Fund (SCF), which is featured in the foregoing article and on pp. 47–49 of the September 2009 AFE–ADB News, provides significant assistance to the needy in Metro Manila. Through the SCF, ADB staff members contribute to organizations that are doing a good job of assisting the needy and that are accountable—SCF monitors the recipient organizations well. Should you wish to join this worthy effort, send your contribution through AFE (by check—noting on the check that the donation is for the SCF—or inquire via e-mail for telegraphic transfer information). If you are based in the Philippines, and would like to assist by working with the SCF, visiting and monitoring the charities it supports, contact Susan Onday at 632-5681.*



# Influential Woman— Ethel Luzario

Rosie Luistro (ADB 1967–1998)



On 30 October 2009 in the Claremont Hotel Club and Spa in Berkeley, California, the Filipina Women's Network's second nationwide search for the 100 most influential Filipino women in the US culminated at a recognition awards gala. This working

recognition award is a key initiative of Pinay 2012, aiming to double the number of Filipina women leaders by 2012. On the same night, the "Womentoring Pinay Circle" was launched. This aims to provide professional and personal development for women leaders, exposing them to critical public and private sector issues affecting Filipina women and enhancing their competitive knowledge from state, national, and global perspectives. It also connects Filipina leaders from across the US with each other and with decision makers, thinkers, and practitioners, and promotes creativity and innovation through the sharing of ideas and best practices. The Pinay Circle members are empowered to contribute more fully to the communities and companies where they live and work.

The gala night was organized to honor Filipina women in their capacities as chief executive, president, executive director, and/or founder of a company, community organization, nonprofit, or business venture that they helped start, build, or significantly grow.

AFE's Ethel Luzario, who worked at ADB from 1976 to 1981, was among the recipients of the awards for the 100 Most Influential Filipina Women in the US, in the category, "Founders and Pioneers." She was recognized for her roles as cofounder of The 3000 Club, a food rescue and medical assistance, nonprofit organization; international



Ethel Luzario: Pioneering Filipina in the US.

relations chair for Lions Clubs in Arizona; and president of the Philippine-American Chamber of Commerce of Arizona.

Ethel has led medical outreach missions to various countries, including the Philippines. Recently, she spearheaded a successful fund-raising concert in the Fil-Am community in Phoenix, Arizona for the victims of Typhoon Ondoy. The Philippine Chapter of AFE-ADB was chosen as one of the 23 NGOs to channel financial and material help to people severely affected by the floods.

## Authoring: Freddie Lees

Frederick Lees (ADB 1981–1985)



Frederick Lees' new novel, *The Malayan Life of Ferdach O'Haney*, was published in October 2009. The book is a fictionalized account of Freddie's own experiences in the 1950s in Malaya. The book is described as follows.

"It is 1950 and the Federation of Malaya is in the throes of the Malayan Emergency.

The British are struggling to defeat the communist terrorists and deal with rising nationalism in the colony.

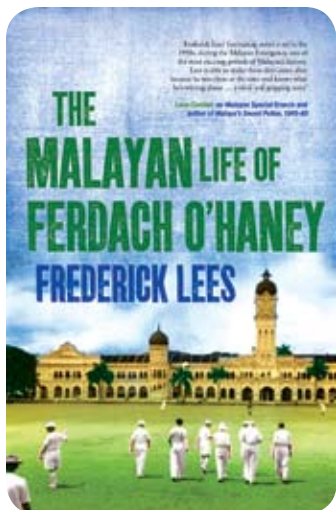
"Ferdach O'Haney arrives in Malaya as a young Anglo-Irish man to serve the Federation government, and he is plunged into the nitty-gritty of Malayan Emergency duties in the New Villages and in the communist occupied jungles of Perak.

"Gregarious and bisexual, O'Haney is equally at home in the brothels of Penang and in Singapore's sleazy Bugis Street as he is in the corridors of British intelligence at Phoenix Park in Singapore and in the manicured grounds of King's House and Carcosa in Kuala Lumpur. He befriends communist terrorists and nationalist sympathizers, experiences the bloody Maria Hertogh race riots, and comes up against prejudiced colonial administrators. O'Haney meets General Briggs and Chin Peng, the leader of the communist guerrillas, and he reveals new information about the assassination of Sir Henry Gurney."

Comments on the book are as follows:

"Frederick Lees' fascinating novel is set in the 1950s during the Malayan Emergency, one of the most exciting periods of Malaysia's history. Lees is able to





make those days come alive because he was there at the time and knows what he's writing about ... a vivid and gripping story"—*Leon Comber, ex-Malayan Special Branch and author of Malaya's Secret Police, 1945–1960*

"The book is beautifully written and plotted with a touch of genius."—*Fred E. Fisk, Professor of South-East Asian Studies, Australian National University*

"A vibrant and sensitive account of what it was like to be in Malaya during the most difficult stage of the Emergency"—*Sir Phillip Moore, former Private Secretary to Queen Elizabeth II*

To order, go to: [http://www.monsoonbooks.com.sg/bookpage\\_0823825.html](http://www.monsoonbooks.com.sg/bookpage_0823825.html) or write to Monsoon Books, 52 Telok Blangah Road, #03-05 Telok Blangah House, Singapore 098829.

Freddie's three other books are *Annals of the Purple City*, which was inspired by a sojourn in Macau, where he studied Chinese, published in 1995; *The Arthuriad of Catumandus* (1996); and, more recently, *The Rape of Rye*.

## Mopping up Toxic Waste

Karti Sandilya (ADB 1986–2004)



It all started when Richard Fuller, President of Blacksmith Institute, walked into my office at NARO one morning in 2002, wanting introductions to ADB staff in Manila.

Blacksmith Institute is a nonprofit organization in New York that helps clean up toxic polluted sites in developing countries. Its focus is legacy sites, where the original polluter is long gone—defunct, bankrupt, or otherwise unavailable to pay for cleanup. In developed countries, government programs—such as SuperFund in the

US—have dealt with legacy pollution effectively but the problem has not gained much attention in developing countries. And it has been getting worse as globalization shifts manufacturing—and attendant pollution—to developing countries.

Blacksmith Institute focuses exclusively on sites that poison people. And children tend to be the worst affected. Because of their smaller body weight, exposure to a given dose of toxins has a much greater impact on children than on adults. The most dangerous toxins are lead, mercury, and arsenic (which retard brain development in children); chlorinated solvents (which lead to organ malfunction); radionuclides (which cause cancers); and azodyes and chromium (which affect maternal and infant health). In the worst cases, life expectancy is sharply reduced.

I found Richard's cause compelling and his passion for protecting children attractive. I therefore took extra trouble to get him appropriate meetings in Manila. I was pleased he had a similar impact on my colleagues at ADB headquarters. He returned to New York with a technical assistance grant of \$250,000 from the Poverty and Environment Fund. The purpose was to identify and evaluate a range of polluted sites in India. The output was provided to the Indian government, which promptly requested funds to help clean up the worst sites. As ADB couldn't offer concessional resources, India is now negotiating a World Bank loan.

I thought my connection with Blacksmith Institute would end there, as I retired from NARO in 2004. Imagine my surprise, then, when Richard called to ask if I would help Blacksmith Institute raise multilateral resources for toxic cleanup! I was delighted: it would give me something worthwhile to do, and make use of my ADB experience. Richard's and my efforts since then have centered on promoting a health and pollution fund, which we conceive as a multidonor facility that makes grants for cleanup projects. It would be housed partly in ADB (for the Asia and Pacific region) and partly in the World Bank (for the rest of the developing world). We are currently doing the rounds of bilateral aid agencies and are very encouraged by the support expressed thus far.

With funding from the European Commission and Green Cross Switzerland



Child working on a dumpsite.

(an NGO), Blacksmith Institute is also implementing the Global Inventory Project to assess toxic sites in over 50 countries. By the end of 2010, about 3,000 sites will have been covered, showing that 200 million people or more are at risk and that this is a health problem of a magnitude similar to malaria and tuberculosis. I'm happy to report that ADB is cofinancing the project with a grant of \$900,000. When completed, the project should provide solid evidence to back our case for the health and pollution fund. Watch this space!

## Confessions

Nannette Guinto Amorado



I can't believe I am now on my fifth year here in New York! I thought I would be here only for a year.

**Special Leave.** I arrived in late September 2005, on special leave without pay from ADB, to work as an audit specialist

for the United Nations Development Programme (UNDP). The whole recruitment process was like a roller-coaster ride that commenced with my online application in September 2004 after initial consultation with my immediate family, and concluded only after a telephone interview, a 2-hour written exam in UNDP's Makati office, a panel interview at its headquarters in New York, a video interview by my future boss, submission of personal technical documents, reference

checking, a medical check-up by a UN doctor, and a final review and approval by UNDP's appointment and promotion panel. After each major milestone, I had reflective conversations with my husband and children. During the process, I had to be hospitalized twice, first for an invasive biopsy that indicated a precancerous state and second for surgery that indicated benign results. Meantime, I had to prepare for an art exhibit in July. Finally, around August, I learned that I was selected. To have some flexibility, I decided to take a 2-year special leave, which was granted with help from my then boss (Peter Pedersen).

I arrived in New York with my 21-year-old daughter, who was to pursue her master's degree in forensic psychology, and my husband, who came temporarily to assist with the luggage, due to my recent surgery, and to help us move in to an apartment. Left in Manila were my 16-year-old son, who was in school; my 83-year-old mom; and my art career, which had been steadily taking off. I took a deep breath. The contract was only for a year anyway, so I said to myself.

**Adapting.** The first year was horrible, as the family struggled, being apart for the first time. I anchored on my faith and my friendship with former ADB colleagues (Ruth Esmilio and Chato Ledoño O'Buckley). Thanks, too, to my former Japanese audit colleagues (Toshio Higaki and Kiyoshi Okamoto); former boss (Louis Wong); and another ADB colleague (Francis Narayan), who introduced me separately to Shoji Nishimoto (then UNDP's Assistant Administrator and Director of the Bureau for Development Policy). Shoji welcomed me warmly and gave me tips on how to survive New York and UNDP! This was how my ADB connection

helped plant my feet firmly on the ground. Through Ruth and Chato, I met more former ADB staff working in the UN system, including Emma Dumalag, who later became a very good friend. Being with former ADB staff indeed made my transition less painful.

I accepted a contract extension for another year, as I could not leave my daughter alone in the midst of her higher studies. Then, my 2-year special leave was up. So, I retired in September 2007. While I was relieved when I made my final decision, I was so grateful to ADB for the 25 years, for



Ribbon-cutting ceremony.





"Hope" (Water-mixable oil on canvas). Nannette Guinto Amorado.

the knowledge gained and shared, professional experience, meaningful friendships, and valuable lessons learned. Blood, sweat, and tears, sure. But laughter, too! My UNDP contract was extended for another 2 years. I started getting involved in activities such as travel and art again, and the Philippine Cultural Society.

**Moving On.** The opportunity to do one-woman art shows presented itself. From 22 September to 3 October 2008, I exhibited 24 oil paintings at the UN Secretariat Lobby during the General Assembly time. Many people from all over the world viewed my paintings and I received good comments, and sales! The exhibit was sponsored by the Philippine Cultural Society. My next art exhibit, this time at the Philippine Center in New York, is scheduled from 26 April to 7 May 2010.

Another career opportunity also presented itself. In UNDP, where promotions are not given as a matter of course, I competed globally for the next higher level as chief of a unit and went through another rigorous recruitment process that included a longer written exam and more panel interviews! I survived.

Now in my 5th year, my audit career continues to be fulfilling, and my art career looks very promising. The family is thriving. My husband, who took early retirement from his VP job at Bank of the Philippine Islands, is enjoying his time as an eco-friendly agronomist and contract grower, between attending to our son and visiting my mom in Bicol and us in New York.

So, up to when will I be here? I will go when and where God leads me. After all, that is what I have been doing all these years.

## Good Ghosh

Jill Gale de Villa

In November, I met Prodipto Ghosh at ESCAP in Bangkok, where he was attending a workshop in preparation for an ADB–UNESCAP–UNEP publication on green growth. Over lunch, I learned what Prodipto's been up to in the last 7 years.

In 2001, a few people at ADB who were working with Prodipto walked into his office and congratulated him. "For what?" he asked, "Did I get a promotion?" They informed him that, according to the Internet, he was the new Additional Secretary to the Prime Minister of India.

This came as a surprise—and an interesting challenge. As a former civil servant, Prodipto felt duty-bound to heed the call to return to government, and he left ADB well prior to retirement age to move into a very hefty job indeed. In 2003, he became the Secretary, Ministry of Environment and Forests. In 2007, he retired again, this time from government service, only to launch into an even busier life with The Energy and Resources Institute (TERI), a nonprofit scientific and policy research organization working in India and globally in the fields of energy, environment, and a whole range of other issues toward sustainable development.

As one of TERI's 12 Distinguished Fellows (in its staff of about 700), Prodipto is working on a multitude of issues—including energy, environment, and governance. Recently he has primarily been helping the government prepare its position on climate change, and handling some of the negotiations. He is also working on climate change policy—given the melting of the Himalayan glaciers, India will be severely impacted due to a change in water flows as well as other factors, such as increasing temperatures. He has had significant input to India's National Action Plan on Climate Change.



Prodipto Ghosh

At TERI, Prodipto really enjoys working with the younger people, who personify a generational cultural shift—they respect experience, intelligence, and ability; age and seniority alone won't do the trick. Prodipto notes that the younger ones keep everybody on their toes.

In addition to his many involvements with and through TERI, Prodipto has a few other items to assure that he has no spare time, including chairing a committee that decides on performance awards

to petroleum companies for their action toward the sector's sustainability, governance, innovation, and—to get the balance right—the best female staff members. And he advises the Federation of Indian Chambers of Commerce and Industry (FICCI) regarding climate change and environmental policy issues. He serves on two committees for FICCI, one on climate change and industry, and another on traditional knowledge systems, which involve complex issues such as assigning property rights.

Just before returning to the workshop, I asked Prodipto if he saw his wife occasionally between all these activities, and he noted he had been traveling so much lately that he had far too little time at home. Prodipto has two sons—one now working at ADB, and the other a sophomore at Carnegie Mellon. If you'd like to know more about what Prodipto has been up to, Google him and look at a smidgeon of the over 15,000 items that come up.

## John Boyd Elucidates: What's the Law?

Jill Gale de Villa

After retiring to California in 2006, John Boyd found himself bored. So he returned to the Philippines. Once back, the dean of a Philippine law school asked him if he would be a lecturer. John was thinking about environmental law, but the dean noted that students want to know more about US law, and some of them may be practicing in the US at a later time. Further, while the Philippine legal system needs to find Philippine solutions, the Philippine law relies in part on the precedents set by some US cases.

John had studied constitutional law in college and law school, and started to review *Constitutional Law in a Nutshell*—600 pages seems like a large nutshell! He also reviewed five other books. John figures that each 3-hour lecture he gives for the first time takes 3 days of preparation. His lecture class has 15 students—all sharp, and interested.

Among the more interesting, and important, cases in US legal history that John discussed in his class is *Marbury vs. Madison*. In that case the Federalist John Adams, in his last night in office as US president in 1801, signed appointment papers for numerous justices of the peace, William Marbury among them. When



John Boyd.

Thomas Jefferson, an Anti-Federalist (or Republican) assumed the Presidency the next day, some of these papers had not been delivered due to time pressures. Jefferson ordered James Madison, his secretary of state, to withhold delivery of these remaining papers. Marbury petitioned the Supreme Court to force Madison to deliver the papers.

But in 1803 the Supreme Court denied his petition, maintaining that part of the statute on which he based his claim was unconstitutional. This is a landmark decision because it was the first time the Supreme Court had declared that legislation was unconstitutional, and it initiated the practice of judicial review in the US, allowing the courts to invalidate acts of the President and the Congress, and helping to define the checks and balances among them. After the lecture, one of the students congratulated John on providing the best explanation of the case he had heard, making it easier for his students to understand the origins of judicial review, a concept employed by the judiciary in the Philippines and many other countries.

John notes that there are lots of great cases, and the discussions with his students are energizing, fun, interesting, and very rewarding.

John also gives lectures on sustainable development and related legal issues, based on his experiences at ADB and a book that he authored with two colleagues, Professors Peter Rogers and Kazi Jalal (formerly head of the Office of Environment and Social Development before retiring from ADB). This book—*An Introduction to Sustainable Development*—is published in English by Earthscan and in Chinese by authorization of Harvard University Press. Since publishing the book, John has given lectures at Tulane University, the University of Utah, and annually at Harvard University, where Professors Rogers and Jalal teach.

John also authored an article published in the *Kansas Journal of Law and Public Policy*.

In the article, he argued in part that international financial institutions should strengthen the legal education of lawyers and judges to help prevent discrimination against women and the poor, protect the environment, combat corruption, improve governance, and facilitate trade and investment.

John's current big project is to lose 20 pounds by sticking to a strict diet and going swimming for 1/2 hour a day, 5 days a week. John finds the diet a bit confining, but he thinks that life is still an enjoyable swim in Manila's warm weather.



# Chong Serp Chung

Jill Gale de Villa

Walking around the village where I live, I bumped into Mr. and Mrs. Chong Serp Chung. The reintroductions were followed by the inevitable “What are you doing nowadays?” To which Chong Serp (CS) replied, “teaching at a university, consulting work here and there, and traveling around.” Our next meeting was another unplanned encounter as we passed on a village path, and CS and his wife, Heja Lee Chung, invited me to drop by.

CS retired from ADB in 2002 with an offer to teach, which he intended to take up quickly. However, fate stepped in. On his last working day, Heja had to rush to the hospital in Manila with an aneurism in the brain. After two major operations in 3 days, Heja needed a lengthy recovery period and could not travel. Happily, her recovery has been remarkable—she is now very well indeed and can play golf.

**Powering Up.** CS found his services in high demand from his base in Manila, given his BS in electrical engineering, MS in industrial engineering and engineering economics, and PhD in commerce and international finance, plus 36 years of practical experience, including 24 with ADB. First, he took the offer from Korea Electric Power Corp. (KEPCO) as its adviser for overseas operations, and helped KEPCO in Seoul and KEPCO Philippines (KEPHILCO) to develop their projects. KEPHILCO had two projects at that time: The first was rehabilitating the Malaya power plant, which was down to producing only 200 megawatts (MW) from its installed capacity of 600 MW due to poor maintenance. KEPCO successfully restored the plant to 650 MW at a cost of about \$210 million on a build-operate-transfer (BOT) basis. The other project was bringing onstream the new Ilijan power plant in

Batangas using natural gas piped undersea from the Malampaya gas field in Palawan. Ilijan contributes 1,200 MW of power to the Luzon grid. CS also led KEPCO project missions to East Timor and Libya. And he visited the Ukraine twice in 2002 and 2003 as advisor to the government on energy conservation and efficiency.

Then Samsung Corporation in Seoul asked CS to be its adviser for overseas projects, which he has been doing for more than 6 years. During the summer of 2008, CS stayed in Honduras as the government adviser on national energy policy.

**Imparting ADB Experience.** In March 2005, CS turned to teaching at Chung-Ang University in Seoul, one of nine top schools in the Republic of Korea that offer a graduate program in international studies. This MA degree program was set up to effectively cope with globalization issues, in which the Republic of Korea is still behind despite being the 15th largest economy and the 9th largest exporter in the world. CS' services are in demand, because the Republic of Korea needs to increase its efforts at participating in globalization by improving its peoples' understanding of other cultures and how they operate internationally, and by improving its English language competence. The entire program is taught in English. CS' teaching, rather than being theoretical, is based on his first-hand knowledge and experiences from work at ADB and post-retirement activities, which he believes his students appreciate much. The specific courses CS teaches are “International Organizations and Project Development,” and “Project Management”—both areas in which he has had extensive experience.

**Traveling Around the World.** Among other trips, in January 2007, CS and Heja took an 18-day safari in Africa with friends—which CS lists as the most wonderful and unforgettable trip. A couple of pictures from the trip are shown here.



Heja Lee Chung, riding an ostrich, on safari.

Heja and Chong Serp Chung, on safari.

## It's All About Communicating



**M**anny Faelnar (ADB 1970–1995) writes that he continues to pursue his long-standing interest in education. He is working with the DILA Philippines Foundation, Inc. DILA stands for “Defenders of Indigenous Languages of the Archipelago.” The word *dila* means “tongue” in Pilipino.

DILA advocates that education should be done in the mother tongue, with other languages taught from that language. The logic is that learners learn best through the language they speak at home. In the Philippines, this would mean that Cebuanos would learn Tagalog and English through being taught in Cebuano.

Manny represents DILA in the Multi-Language Education Forum, where he also uses his lawyer skills to assist with interpreting constitutional requirements and compliance with portions of the UN Convention on the Rights of the Child. Manny’s work, which is pro bono, has kept him traveling. He is currently co-convenor for Language and Culture, Solidarity Movement International; vice president, DILA Philippines Foundation; director, Lubas sa Dagang Bisaya; and a member of the Philippine Linguistic Society.

Manny presented his new paper, “The Impact of Government Policies on the Indigenous Languages of the Philippines,” at the 1st Philippine Conference on Mother Tongue-Based Multilingual Education in Cagayan de Oro City on 18–19 February. About 1,000 participants registered for the conference-workshop.

## Singapore with Raffy and HP Space

Rosa Francisco (ADB 1966–1992)

**I**t seems like only yesterday, when I was still working with ADB as the late Dr. S. C. Hsieh’s secretary in 1972, when our youngest son, Raffy, was born. Last year, 37 years later, Raffy was chosen from among 2,600 applicants from Asia to compete in the 2-month

HP Space Contest held in Singapore in November and December. HP Space is an original reality show that celebrates the spirit of creative innovation. You may watch it at [www.hpspace.com](http://www.hpspace.com).

Of the 16 contestants, Raffy and two others achieved the finals, and Raffy made it to the number two slot. I told him that the real winners in the contest were me and my granddaughter who were flown to Singapore for a 4-day stay to participate in the final awarding ceremonies.



Raffy and Rosa Francisco.

## Bowling Us Over

Ophie Sta. Ana (ADB 1967–1996)



**J**un (Lydio) Trasporto (ADB 1978–1989) grew up at the employees housing compound of La Carlota Sugar Central in Negros Occidental, where his father was employed. He was inspired by hard-helmeted men, so he took up Mechanical Engineering at the

University of Iloilo, graduating in 1976. In 1978, he moved to Manila and joined ADB, where he met his future wife, Malou Dimaguila. They both stayed for 11 years before migrating to Canada. Before he left, Jun was already making waves in the local bowling leagues.

With his Philippine experience, Jun tried pursuing a banking or an engineering career in Toronto but found difficulty due both to the recession and lack of “Canadian experience.” Thus he accepted odd jobs in a pharmaceutical firm, earning him a decent income. However, he lacked interest in and motivation for such jobs. Malou counseled him to accept a job that would make him happy.

When in Manila, Jun was president of the Tenpin Bowling Association of Makati and a member of the board of directors of the Philippine Bowling Congress. What he loves best, is spending hours in the bowling alley practicing almost everyday. This inspired him to start a Pro Shop in the bowling center in Toronto. He





Standing (L-R): Vlad Cabio, Malou Trasporto, Jun Trasporto, and Penny Laquindanum. Seated (L-R): Cita dela Rama, and Marissa del Castillo.

became a much sought-after ball driller in the greater Toronto area, and, soon thereafter, a full-fledged instructor, then a top-caliber bowling coach. and

1. one of the first 13 bowling pro shop professionals in the world to have technical certification from the International Bowling Pro Shop and Instructor Association (IBPSIA);
2. the only person in Ontario who is an IBPSIA-certified technical instructor, and one of only three pro shop operators in Canada with the certification; and
3. the bowling ball driller expert in the greater Toronto area.

Jun had been technical coach of the Republic of Korea's national bowling team in 2006. His team won their first World Championships gold medal during the 2006 Men's World Championships in Busan, and made history by winning both gold and silver medals in the Trio Event. In December of the same year, Jun's Korean team collected 4 gold, 4 silver, and 3 bronze medals in the Asian Games in Doha, Qatar. For the next 3 years (2007–2009), Jun coached the Qatar National Bowling Team that won the silver medal during the Asian Indoor Games in Macau. His Qatar bowling team also established a record in the Arab Games by winning the "grand slam"—all the 4 gold medals.

The most recent feather added to Jun's cap is his inclusion, for the second time in 3 years, in the annual selection of the "100 Top Coaches" in the world, which features bowling coaches who are the most knowledgeable and dedicated instructors. He has also been cited this year by *Bowling Magazine* as one of the world's 10 most noteworthy international coaches, along with the Philippines' 4-time world bowling champion Paeng Nepomuceno. Late in 2009, the Philippine Sports Commission announced it was hiring Jun to coach its teams in 2010.

## A Cambodian in the Arctic

Someth Suos (ADB 1970–1999)



Last June, Lim Kim Lin, a former ADB agronomist, and I travelled nearly to the North Pole. The starting point was Longyearbyen in Svalbard ("cold coast"), Norway on the Arctic Ocean at 78 degrees N and just 1,000 km from the Pole. Longyearbyen is an old mining

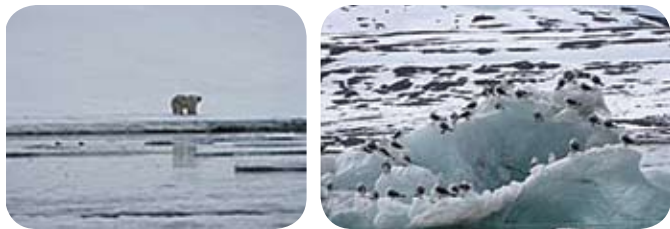
community. We stayed at a guest house reminiscent of my college dorm in Phnom Penh in the 1950s. My initial concerns about intense cold and frostbite were overcome by my desire for this once-in-a-lifetime experience.

We set sail on M/V Prince Albert II of Silversea on 17 June—116 excited explorers and 100 crew members, including 7 specialists such as biologists. The very next day we spied our first polar bear and boarded a Zodiac for a closer look. We got to within 200 m of the beautiful 500-kg male bear. It showed no fear of us. Champagne and chocolate were produced to commemorate the sighting and, as we left to cruise further north, we saw the bear looking majestically at us, then rolling down the slope and disappearing into the water. Seeing the polar bear inspired us all. Next we passed by icy, treeless mountains and large glaciers in deep fjords. It was awesome terrain. No one lives there, though there have been explorer bases since 1773.

As we continued northward, more and bigger icebergs appeared, some crystal clear, others dark and bluish, seemingly deliberately carved. We went ashore to explore a huge glacier named "The 14th of July" by its French discoverers. There were bearded seals and many birds, some perched atop a curved iceberg—looking like an ice cream cone topped with black chocolate sprinkles. On the tundra, tiny pink and blue flowers hugged the ground in bunches for survival, nature's magic.

In the late afternoon a Filipino pianist serenaded us. The captain told us the program would have to be flexible depending on the weather, but we would go by boat as far north as possible.





Smeerenburg, once a Dutch blubber station, was our next stop. We walked on a large eery field strewn with whale bones. A dilapidated shack still stood with a broken chair and an axe nearby. The remains of a blubber oven are now covered in part by sand and debris, as if nature wants to bury the tragic past. The plunder almost wiped out the species until, following World War I, Norway gained sovereignty over the archipelago. Today it is a protected sanctuary. On another site stands a shack rehabilitated by scientists as a research and observation post. Nearby lay rusting equipment once used for quarrying marble that proved too brittle to use. Reindeer grazed in the distance.

The weather stayed good though overcast, and dark clouds always hung over the mountain range. The following morning we awoke to find the ship surrounded by ice sheets of all sizes. We had passed the 80th parallel. Out we hurried with our cameras. A few birds flew around; far away, a seal lay on a blue ice sheet, and a whale came up to breathe. The ship moved further north to the 81st parallel, merely 9 degrees from the geographic North Pole and somewhat north of the geomagnetic North Pole's longitude (*which is currently floating over Canada toward Siberia-Ed.*). We boarded the Zodiac again to observe more closely the iceberg formations as we passed through narrow channels between the ice. We learned later that this was the furthest north a tourist ship had ever travelled.

We stayed nearly 3 hours in the ice. On the way back we cruised along the Svalbard coast and anchored off Poolepynten fjord and visited the Forland National Park. About a dozen walrus slept close to each other like a pile of logs. Like the whales, the walrus were nearly hunted to extinction in the 19th and early 20th century for blubber and ivory. Today, experts believe that they are again thriving.

As we came to the end of the voyage, we were entertained with music, song, and dance by Russian families who live in St. Jonfjorden, a settlement around a mining operation, where Lenin's bust is still displayed. Back on the boat, I felt wonderful, a dream fulfilled by a once-in-a-lifetime voyage to the "edge of the possible." But, who knows, I may return like the octogenarian who brought his son on the cruise so he could experience the same ecstasy of discovery that he and his wife had enjoyed once long before.

## Heh-Song Wang— Speaking and Authoring

AFE Taipei, China member, Heh-Song Wang (ADB 1971–1995) spoke at two meetings and launched a new book in 2009–2010. At the annual meeting of the Overseas Compatriot Affairs Commission of Taipei, China, he addressed 175 overseas Chinese community leaders from 56 countries on "Taipei, China's Recent Economic Development and Outlook." His address focused on the impact of the global financial crisis on Taipei, China's economy, the policies the government adopted in response to the crisis, and development opportunities and challenges. A lively Q&A session followed.

On 21 January 2010, he addressed a seminar titled "Taipei, China's Participation in Regional Economic Integration, Using ADB as an Example." The participants and speakers included key officials, eminent scholars, academicians, and officials from the Central Bank and the Ministry of Foreign Affairs. As a former strategy and policy officer at ADB, he presented basic information about ADB; the role Taipei, China plays in ADB; and the future direction of regional economic and financial cooperation through ADB. Robert Yeung (former deputy director general, BPMSD) joined the discussion and shared information about ADB's vision and mission, recent developments, and suggested ways to increase collaboration with ADB. Yen-Dar Den (former director's adviser at ADB and current assistant director general at the Central Bank in Taipei, China) discussed the links with ADB and opportunities for further cooperation. The seminar

concluded that it is time for Taipei, China to take the initiative to work closely with ADB to strengthen economic links and financial cooperation with other Asian and Pacific countries.

Heh-Song Wang writes that his new book, *Global Economic and Financial Crises*, was published by the



Heh-Song Wang and Taipei, China's President Ma Ying-jeou, before the meeting.





Standing (L–R): TKuo-Chun Yeh, Yen-Dar Deb, Chen-Dong Tso, Ming-Hsin Kung, and Pierre C.C. Chen. Seated (L–R): Fu-Kuo Liu, Bih Jane Liu, Chien-Huang Lin, Heh-Song Wang, and Robert C. Yeung.

Taiwan Academy of Banking and Finance in September 2009. It has been well received by readers around the world, including overseas Chinese and domestic bankers, and as a college textbook.

## The Barangay OBG

Tess Gonzales (ADB 1969–1996)



Some 30 years ago, a sistership of 20 was formed, among Connie Baylon, Adel Burgos, Nieves Callanta, Lou de Belen, Citas Diaz, Lita Gamboa, Shawn Gochangco, Tess Gonzales, Layda Llamanzares, Dita Medina, Virgie Nadal, Pining Ocampo, Amy Puno, Tess Pusta, Ched Rana, Lulu Roa, Tess

Salazar, Albertine Santi, Edna Santiago, and Ruby Sioson. The common thread that bound us together was being part of the former Operations Department.

Ours has always been a loosely formed group. There are no officers except the “holder of treasure.” There are no goals to meet, no rules to submit to, no need for minutes. The group meets as often as desired. In time, we started to call our group the OBG...Oldies but Goodies.

Over the years we have “raised husbands,” nourished and nursed kids, stood as godmothers for each other’s children, taken care of ageing parents, married off children, buried parents, taken driving lessons, crocheted curtains and knitted baby dresses, and done all the things that women do together. We aged, not only numerically but also dimensionally; we became grandmothers.

Mostly baby boomers, we grew and matured during a golden age when women developed to become competent persons, able to hold a job, manage a



Standing (L–R): Tess Salazar, Dita Medina, Lulu Roa, Albertine Santi, Tess Pusta, Lita Gamboa, Ched Rana, Virgie Nadal, Lou de Belen, Amy Puno, Ruby Sioson. Seated (L–R): Layda Llamanzares, Nieves Callanta, and Tess Gonzales. Taken at the Makati Garden Club in December 2009.

home, and be creative. Many of us are actively engaged in parish work. A number of us are continuously caring for parents. Some are extending helping hands in the care of grandchildren.

We planned varied activities during our quarterly stints. We once rented a van to drive to Vigan. We joined a walking tour of Chinatown. We boarded the Pasig River ferry at Makati, got off at Escolta, and shopped. We lunched at the Makati Shangrila. We made a pilgrimage to churches in Rizal and Laguna. We attended a healing mass in Los Baños.

We also did some outreach activities. Once, we went to spread cheer to senior citizens at Golden Acres. We listened to their life stories, and joined their choir in singing Christmas carols. We played games, sang songs, and danced with children stricken with cancer at the Child’s House in Quezon City. Our hearts went out to the children with cerebral palsy when we visited their home—The Chosen Children in Tagaytay.

We did not forget culture. We visited the Ayala Museum and the artists of Angono. We visited Marikina City to see how a third-class municipality can rise and become a well-run city.

The OBG provides a field for love to prosper and grow. We cry with a sister when her heart is full of woe. We pray with her, too. We cheer for a sister when she gets a coveted post, when a daughter is *summa cum laude*, when a son takes a bride, when a husband wins a court case, when the doctor declares one is CA-free, and the most joyful of all graces—when a grandchild is born. The OBG is a circle of hands ready to share, to sympathize, to pray with, to laugh with, to be joyful with, to suffer with.

The OBG has had some changes: two of our members are now US-based, but manage to visit once a year; another who spent nearly 20 years in the US has returned; and two have passed away. At this time, what do we have look forward to? Maybe to celebrate our 40 years of togetherness, of sisterhood... Yey, OBG!

# Look What Came for Dinner

Charles Currin (ADB 1988–1991)

The creature in the photos was captured in my dining room a few nights ago. Quite a merry chase. The cobra now resides in a cage, but I keep the cage in the garden instead of on the terrace. Just in case. I will probably keep the cobra for a few more days and make its cage more comfortable by adding some leaves and branches for it to hide under. Then I will release it in some remote spot where it will not bother anyone (and vice versa). There is no point in killing it, since, in fact, I am the intruder here by building a house in its traditional habitat.



Mirbabayev, Batir (Uzbekistan)  
Santos, Stephen O. (Philippines)  
Vencio, Mary Claudette (Philippines)  
Wells, Nancy (Vanuatu)  
Zimmermann, Ute (Germany)

## January 2010

Alcantara, Agnes A (Philippines)  
Del Rosario, Raul B.U. (Philippines)  
Fischer, Eveline N. (The Netherlands)  
Florendo, Honeylet C. (Philippines)  
Goertzen, Cyra Michelle B. (Philippines)  
Prijomustiko, Dian S. (Indonesia)  
Rogers, Julie (United States)  
Sandoval, Nilo P. (Philippines)

## February 2010

de la Rama, Carmencita G. (Philippines)  
Ignacio, Lucy B. (Philippines)  
Sarma, K. S. (India)  
Wei, Benhua (People's Republic of China)

# Senior Appointments in ADB

AFE-ADB congratulates the following staff members on their new appointments:

**Shigeko Hattori**, appointed Director, Country Coordination and Regional Cooperation Division, Central and West Asia Department, effective 18 September 2009.

**Takahashi Matsuo**, appointed Director, Agriculture, Natural Resources and Social Services Division; South Asia Department, effective 18 September 2009.

**Kathleen Moktan**, appointed Auditor General, effective 1 October 2009.

**Mitsuhiro Yamawaki**, appointed Director, Credit Risk Assessment Division, Office of Risk Management, effective 1 October 2009.

**Peter Egens Pedersen**, appointed Head, Office of Anticorruption and Integrity, effective 19 October 2009.

**Li Guanghui**, appointed Country Director, Kazakhstan Resident Mission, effective 26 October 2009.

**Woochung Um**, appointed Deputy Director General, Regional and Sustainable Development Department, effective 29 October 2009.

# New Members

AFE-ADB extends a warm welcome to the following new members of the Association (country of residence is indicated in brackets):

## September 2009

Cornejo, Evangeline G. (Philippines)  
Woods, Terence N. (United Kingdom)

## October 2009

Kumar, Meera (United States)  
Marasigan, Marietta de Leon (Philippines)  
Smidt, Pieter M. (The Netherlands)  
van der Tak, Steven H. (Portugal)

## November 2009

Bituin, Rufo F. (Philippines)  
Castañeda, Ma. Soledad A. (Philippines)

## December 2009

Cancio, Marilou (Philippines)  
Cudilla, Emelda T. (Philippines)



**Vankina Tulasidhar**, appointed Advisor, Office of the Director General, Independent Evaluation Department, effective 30 October 2009.

**Ashraf Mohammed**, appointed Assistant General Counsel, effective 1 November 2009.

**Sandra Nicoll**, appointed Director, Public Management, Governance and Participation Division; concurrently Practice Leader, Regional and Sustainable Development Department, effective 30 November 2009.

**Sri Widowati**, appointed Director, Transportation and Communications Division, South Asia Department, effective 30 November 2009.

**Tadashi Kondo**, appointed Head, Office of Cofinancing Operations, effective 1 December 2009

**Javed Hussain Mir**, appointed Director, Agriculture, Environment, and Natural Resources Division; Southeast Asia Department, effective 7 December 2009.

**Jitendra J. Shah**, appointed Advisor, Regional and Sustainable Development Department, effective 7 December 2009.

**Cecile L.H.F. Gregory**, appointed Senior Advisor, Office of the Director General, Pacific Department, effective 15 December 2009.

**Rajat Nag**, appointed Managing Director General for another 2 years, starting 15 December 2009.

**Tatsuya Kanai**, appointed Senior Advisor, Office of the Director General, Central and West Asia Department, effective 15 December 2009.

**Biswanath Bhattacharyay**, appointed Lead Professional (Regional Infrastructure), ADB Institute, effective 16 December 2009.

**Kyeongae Choe**, appointed Lead Professional (Water and Urban Development), Urban Development Division, South Asia Department, effective 16 December 2009.

**Vincent De Wit**, appointed Lead Professional (Health), Social Sectors Division, Southeast Asia Department, effective 16 December 2009.

**Ajay Guha**, appointed Lead Professional (Energy), Energy Division, Southeast Asia Department, effective 16 December 2009.

**Giorgio Iaksetich**, appointed Lead Professional (Human Resources Management), Human Resources, Division; Budget, Personnel, and Management Systems Department, effective 16 December 2009.

**In-Ho Keum**, appointed Lead Professional (Urban Services), Urban Services Division, Central and West Asia Department, effective 16 December 2009.

**Jong-Inn Kim**, appointed Lead Professional (Energy), Sustainable Infrastructure Division, Regional and Sustainable Development Department, effective 16 December 2009.

**Chellam Palanyandy**, appointed Lead Professional (Statistics and Statistical Capacity Building), Development Indicators and Policy Research Division, Economics and Research Department, effective 16 December 2009.

**Daniele Ponzi**, appointed Lead Professional (Environment), Environment and Safeguards Division, Regional and Sustainable Development Department, effective 16 December 2009.

**Ying Qian**, appointed Lead Professional (Regional Cooperation), Financial Sector, Public Management and Trade Division, East Asia Department, effective 16 December 2009.

**Akmal Siddiq**, appointed Lead Professional (Natural Resources Management), Agriculture, Environment, and Natural Resources Division; East Asia Department, effective 16 December 2009.

**V. V. Subramanian**, appointed Lead Professional (Financial Sector - Capital Markets), Financial Sector, Public Management and Trade Division, Southeast Asia Department, effective 16 December 2009.

**Risa Zhijia Teng**, appointed Lead Professional (Portfolio Management and Coordination), Central and West Asia Department, effective 16 December 2009.

**Christopher Wensley**, appointed Lead Professional (Water Resources), Agriculture, Environment, and Natural Resources Division; Southeast Asia Department, effective 16 December 2009.

**Thomas Bieling**, appointed Director, Credit Portfolio Monitoring Division, Office of Risk Management, effective 18 December 2009.

**Douglas H. Brooks**, appointed Assistant Chief Economist, Economics and Research Department, effective 28 December 2009.

**Njoman Bestari**, appointed Advisor, Independent Evaluation Department, effective 29 December 2009.

**Sultan Hafeez Rahman**, appointed Director General, South Asia Department, effective 11 January 2010.

**Kunio Senga**, appointed Director General, Southeast Asia Department, effective 11 January 2010.

**Arjun Thapan**, appointed Special Senior Advisor for Infrastructure and Water, Office of the President, effective 11 January 2010.

**Masahiro Kawai**, appointed Dean, ADB Institute for another 2 years, starting 16 January 2010.

**Carola Donner-Reichle**, appointed Senior Advisor (Capacity Building and Social Development), Regional and Sustainable Development Department, effective 21 January 2010.

**Chan Toong San**, appointed Director, Solution Delivery, Office of Information Systems and

Technology, effective 25 January 2010.

**Tobias C. Hoschka**, appointed Assistant Treasurer, Financial Policy and Planning Division, Treasury Department, effective 5 February 2010.

**Hun Kim**, appointed Country Director, India Resident Mission, effective 9 February 2010.

**Andrea Iffland**, appointed Director, Pacific Operations Division, Pacific Department, effective 18 February 2010.

**Gil-Hong Kim**, appointed Director, Sustainable Infrastructure Division, Regional and Sustainable Development Department, effective upon assumption of office.

**Robert Wihtol**, appointed Director General, Pacific Department, effective upon assumption of office.

For information  
on pension contact  
[pension@adb.org](mailto:pension@adb.org)

Visit AFE online at  
[www.afe-adb.org](http://www.afe-adb.org)

See also ADB's alumni portal  
[www.adbalumni.org](http://www.adbalumni.org)

## Obituaries

It is with deep regret and sorrow that we announce the death of the following former ADB staff members. Our heartfelt and sincere condolences to their families.

**Lily C. Ardoña**, former Associate Cash Operations Administrator, Treasury Department, who passed away on 20 February 2010. Condolences may be sent to her husband Benedicto Ardoña at B5, L81 Edward Go, BF Vista Grande, Las Piñas City 1747, Metro Manila, Philippines.

**Kosuke Nakahira**, former Personal Assistant to the President, who passed away on 23 September 2009 at the age of 70. Condolences may be sent to his wife Noriko Nakahira, c/o Secretary's Office, Shinkin Central Bank, 1-3-7 Yaesu, Chuo-ku, Tokyo 103-0028, Japan.

## AFE-ADB Committees

### Country Coordinators and Subcoordinators

Peter Carroll—Australia  
John Cole—Canada  
Paul Krukowski—Eastern Canada  
Günter Hecker—Europe  
Barindra Ganguli—India  
Dimyati Nangju—Indonesia  
Eiji Kobayashi—Japan  
Hi-Young Kim—Republic of Korea  
John Colin Pratt—New Zealand  
Shahid Mirza—Pakistan  
Gamaliel de Armas—Philippines  
Ko-Hai Sheng—Taipei, China  
Gene Owens—Washington DC, USA  
Nanette Amorado—New York/New Jersey, USA  
Benjamin Bagaoisan—California, USA

### Pension Council Members

Ivan Zimonyi—Chair  
Randy Earman  
Renato Limjoco  
Filologo Pante  
Fred Pascual  
Brahm Prakash  
Antonio Quila  
Jan van Heeswijk  
Graham Walter  
Hans-Juergen Springer  
Jill Gale de Villa  
David R. Parker

### Health Committee

Jill Gale de Villa—Head  
Lourdes de Belen  
Edward Breckner  
Evelyn Go  
Ferdinand Mesch  
Axel Weber



## AFE-ADB Website Now Open to All

Gam de Armas

The AFE-ADB website is now "live" and open to all without the need for a password. Visit <http://afe-adb.org>.

Urgent news and notices are now posted on an as-needed basis, while regular updates are uploaded monthly. Use of the website will be reviewed in 6 months (about November) to determine the reevaluate frequency for updating the website.

*AFE-ADB News* is published twice annually under the auspices of the AFE Editorial Board. The views expressed in the articles are those of their authors and do not necessarily reflect those of AFE-ADB, its officers, or its Editorial Board; or of ADB or its Board of Governors. AFE-ADB does not guarantee the accuracy of information or data presented or accept any responsibility for any consequences of their use.

The policies of the Editorial Board of *AFE-ADB News* include the following:

- 1) Articles and images may be accepted for inclusion if, in the opinion of the AFE-ADB Editorial Board, they are germane to AFE-ADB activities and membership; are of interest to a significant portion of the membership; and do not contain material that promotes a political or religious stance or is potentially inflammatory or offensive to the readership.
- 2) Articles that are accepted will be edited for language, content, and length that the Editorial Board deems appropriate for the readership. Images must be of print quality (at least 280kb or 600dpi is preferred).
- 3) Any photograph that was not taken by the sender should be sent with the photographer's permission for AFE-ADB to publish it. Please identify all people shown in photographs so we can include adequate captions.

To keep the AFE-ADB website current and interesting, members are encouraged to send articles and news items to [afe-adb@adb.org](mailto:afe-adb@adb.org). Chapters can use the website to announce meetings, get-togethers, and plans and programs for the year. Members can share their exciting travel escapades and advice so others can pick up useful tips and enjoy the stories.

Past issues of the *AFE-ADB News* (from September 2008) are available for viewing.

Your submissions, comments, and feedback will help ensure that the website continues to be a useful facility to keep AFE members in touch with each other and with the happenings at AFE and ADB. The website is a work in progress, and sections will be added as the need and ability to do so arise.

- 4) Authors and photographers will be acknowledged and retain ownership of any material submitted for publication.

No articles or images may be reproduced in any form without the permission of the publisher, author(s), and/or photographer(s), as appropriate.

Articles for publication may be sent in MS Word as e-mail attachments to [afe-adb@adb.org](mailto:afe-adb@adb.org). Articles will preferably be 250-500 words. Please send images in a separate file. Comments that will help improve *AFE-ADB News* are most welcome.

## Acknowledgements

Josephine J. Aquino, AFE-ADB's able assistant, provided invaluable help, including gathering materials and typesetting and layout. Andy Carlos and Cesar Juan prepared the magazine for mailing. AFE-ADB sincerely appreciates ADB's assistance with publishing the magazine, especially Carolyn Dedolph Cabrera, Vic Angeles, Ronnie Elefaño, Keech Hidalgo, and Tony Victoria of the publications unit and Alexander Tarnoff, Anna Juico, Vic Lo, Greg Garcia, and Judy Yniguez of the printing unit.

# Announcements



## 2010 Annual Meeting of the ADB Board of Governors

The Forty-third Annual Meeting of the Board of Governors of the Asian Development Bank will be held on 1–4 May 2010 in Tashkent, Uzbekistan.

## 24th Annual General Meeting of AFE-ADB and Related Functions

The Annual General Meeting of AFE-ADB and related functions will be held on Saturday, 1 May 2010. The Country Coordinators Meeting (other members who wish to attend are welcome) will be held at 9:00 a.m. to 12:00 noon. The 24th Annual General Meeting will be held from 2:00 p.m. to 5:00 p.m. And the Cocktail Reception will be held at the Sinbad Restaurant from 6:00 p.m. to 9:00 p.m.

## Chapter Events

The Australian chapter will hold its next annual reunion together with the New Zealand chapter in Queenstown, New Zealand, in October 2010. AFE members are welcome to attend. Please contact Peter Carroll at [pet@bigpond.net.au](mailto:pet@bigpond.net.au) or Colin Pratt at [colin.pratt@xtra.co.nz](mailto:colin.pratt@xtra.co.nz).

The European chapter will hold its 13th annual gathering in Dresden and Environs on 10–13 September 2010. Host Peter Bodora arranged an attractive program. Anyone interested in joining should contact Peter at [PBodora@aol.com](mailto:PBodora@aol.com) or Gunter Hecker at [ghecker1@t-online.de](mailto:ghecker1@t-online.de).

## AFE-ADB News No. 37 (September 2010)

Please send, by July, articles, photos, updates, or comments for publication in our next newsletter.

## Annual Association Dues

Members who have not yet settled their annual Association dues are requested to do so.

## Keep Your Address Updated with AFE-ADB

Please keep us informed about any change in your address, telephone/fax numbers, and e-mail address. We don't want to lose touch with you. Also, if you know any member whose address and other contact details are not listed, or are in incomplete or wrong, please let us know.

## AFE-ADB Contact Details

Mailing address	Executive Secretary, AFE-ADB P.O. Box 789, 0980 Manila, Philippines
Street address	c/o Asian Development Bank Room 2837E (SF), 6 ADB Avenue, Mandaluyong City 1550 Metro Manila, Philippines
Telephone	+63 2 632 4444 (ADB Operator) +63 2 632 5556 (Executive Secretary) +63 2 632 5196 (Administrative Assistant)
Fax	+63 2 636 2444
E-mail	<a href="mailto:hjspringer.consultant@adb.org">hjspringer.consultant@adb.org</a> <a href="mailto:afe-adb@adb.org">afe-adb@adb.org</a>

